

Robeco QI Global SDG & Climate Conservative Equities ICo EUR

Robeco QI Global SDG & Climate Conservative Equities is an actively managed fund that invests globally in stocks of companies that advance the United Nations Sustainable Development Goals (SDGs) and pursue a carbon reduction objective. The selection of these stocks is based on a quantitative model. This fund includes a carbon offsetting share class which compensates for the residual footprint of the portfolio by purchasing carbon credits.



Pim van Vliet, Arlette van Ditshuizen, Maarten Polfliet, Jan Sytze Mosselaar, Arnoud Klep
Fund manager since 13-12-2016

Performance

| | Fund | Index |
|---------------|--------|--------|
| 1 m | 0.17% | 0.20% |
| 3 m | -0.52% | 5.25% |
| Ytd | 0.95% | 1.11% |
| 1 Year | 5.92% | 9.50% |
| Since 10-2023 | 13.12% | 16.43% |

Annualized (for periods longer than one year)
Note: due to a difference in measurement period between the fund and the index, performance differences may arise. For further info, see last page.

Calendar year performance

| | Fund | Index |
|------|--------|--------|
| 2024 | 21.49% | 25.33% |

Annualized (years)

Index

MSCI All Country World Index (Net Return, EUR)

General facts

| | |
|------------------------------|--|
| Type of fund | Equities |
| Currency | EUR |
| Total size of fund | EUR 145,353,587 |
| Size of share class | EUR 31,556 |
| Outstanding shares | 250 |
| 1st quotation date | 11-10-2023 |
| Close financial year | 31-12 |
| Ongoing charges | 0.63% |
| Daily tradable | Yes |
| Dividend paid | No |
| Ex-ante tracking error limit | - |
| Management company | Robeco Institutional Asset Management B.V. |

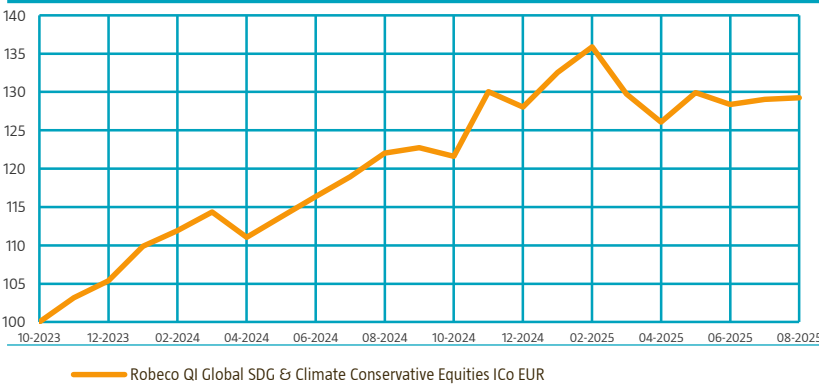
Sustainability profile

- Exclusions++
- ESG Integration
- Voting
- ESG Target

For more information on exclusions see <https://www.robeco.com/exclusions/>

Performance

Indexed value (until 31-08-2025) - Source: Robeco



Performance

Based on transaction prices, the fund's return was 0.17%.

The fund aims to achieve long-term returns greater than equity markets with lower downside risk over the full investment cycle. The selected low-risk stocks are characterized by high dividend yields, attractive valuations, strong momentum and positive analyst revisions. This results in a diversified, low turnover portfolio of defensive stocks that aim to achieve stable equity returns and high income.

Expectation of fund manager

The Global SDG and Climate Conservative Equities Fund invests in low volatility stocks with lower expected downside risk and good upside potential. The more stable stocks tend to be overlooked by investors, though they offer relatively high returns given their risk profile. We expect the fund to do particularly well during down markets and volatile market conditions. In a very bullish environment, the fund could lag the overall market, yet still deliver good absolute returns. In the long term, we expect stable equity returns and high income with considerably lower downside risk.

Top 10 largest positions

The top ten positions are primarily the result of the fact that these large companies have a low expected volatility combined with good upside potential.

Fund price

| | | |
|---------------------|-----|--------|
| 31-08-25 | EUR | 126.23 |
| High Ytd (28-02-25) | EUR | 132.71 |
| Low Ytd (08-04-25) | EUR | 114.46 |

Fees

| | |
|---------------------------|-------|
| Management fee | 0.45% |
| Performance fee | None |
| Service fee | 0.12% |
| Carbon offsetting expense | 0.05% |

Legal status

Investment company with variable capital incorporated under Luxembourg law (SICAV)

| | |
|-----------------|----------|
| Issue structure | Open-end |
| UCITS V | Yes |
| Share class | ICo EUR |

This fund is a subfund of Robeco Capital Growth Funds, SICAV

Registered in

Austria, Belgium, France, Germany, Italy, Luxembourg, Netherlands, Singapore, Sweden, Switzerland, United Kingdom

Currency policy

Currency risk will not be hedged. Exchange-rate fluctuations will therefore directly affect the fund's share price.

Risk management

Risk management is fully integrated in the investment process to ensure that positions always meet predefined guidelines.

Dividend policy

The fund does not distribute dividend. The fund retains any income that is earned, and so its entire performance is reflected in its share price.

Fund codes

| | |
|-----------|--------------|
| ISIN | LU2660287413 |
| Bloomberg | ROCLIC LX |
| WKN | A3EXHX |
| Valoren | 130304748 |

Top 10 largest positions

Holdings

Apple Inc
Microsoft Corp
Visa Inc
Netflix Inc
Walmart Inc
Cisco Systems Inc
Novartis AG
Mastercard Inc
Allianz SE
AbbVie Inc
Total

| Sector | % |
|------------------------|--------------|
| Information Technology | 3.30 |
| Information Technology | 2.78 |
| Financials | 1.74 |
| Communication Services | 1.70 |
| Consumer Staples | 1.67 |
| Information Technology | 1.65 |
| Health Care | 1.62 |
| Financials | 1.61 |
| Financials | 1.57 |
| Health Care | 1.52 |
| Total | 19.17 |

Top 10/20/30 weights

| | |
|--------|--------|
| TOP 10 | 19.17% |
| TOP 20 | 33.00% |
| TOP 30 | 43.93% |

Asset Allocation

| Asset allocation | | |
|------------------|--|-------|
| Equity | | 97.5% |
| Cash | | 2.5% |

Sector allocation

The Global SDG and Climate Conservative Equities Fund is not benchmark-driven. It uses a quantitative stock selection model for bottom-up selection of stocks with low expected absolute risk and high expected return characteristics. The current weights in defensive sectors are high compared to regular indices. This is due to the fact that these sectors contain a relatively large number of stable and attractively priced stocks.

| Sector allocation | | | Deviation index | |
|------------------------|------------------------|-------|------------------------|-------|
| Financials | <div><div></div></div> | 27.3% | <div><div></div></div> | 9.5% |
| Information Technology | <div><div></div></div> | 21.3% | <div><div></div></div> | -4.8% |
| Communication Services | <div><div></div></div> | 15.4% | <div><div></div></div> | 6.6% |
| Health Care | <div><div></div></div> | 11.1% | <div><div></div></div> | 2.4% |
| Industrials | <div><div></div></div> | 8.6% | <div><div></div></div> | -2.2% |
| Consumer Staples | <div><div></div></div> | 7.0% | <div><div></div></div> | 1.4% |
| Real Estate | <div><div></div></div> | 4.7% | <div><div></div></div> | 2.8% |
| Consumer Discretionary | <div><div></div></div> | 3.1% | <div><div></div></div> | -7.4% |
| Utilities | <div><div></div></div> | 1.1% | <div><div></div></div> | -1.5% |
| Materials | <div><div></div></div> | 0.3% | <div><div></div></div> | -3.3% |
| Energy | <div><div></div></div> | 0.0% | <div><div></div></div> | -3.6% |

Country allocation

The Global Sustainable Conservative Equities Fund is not benchmark driven. It uses a quantitative stock selection model for bottom-up selection of stocks with low expected absolute risk and high expected return characteristics. The current weights in certain countries are high compared to regular indices. This is due to the fact that these countries contain a relatively large number of stable and attractively priced stocks.

| Country allocation | | | Deviation index | |
|--------------------|------------------------|-------|------------------------|--------|
| United States | <div><div></div></div> | 56.4% | <div><div></div></div> | -8.2% |
| Japan | <div><div></div></div> | 6.7% | <div><div></div></div> | 1.8% |
| Switzerland | <div><div></div></div> | 6.1% | <div><div></div></div> | 4.0% |
| Germany | <div><div></div></div> | 5.3% | <div><div></div></div> | 3.1% |
| Canada | <div><div></div></div> | 4.4% | <div><div></div></div> | 1.5% |
| Finland | <div><div></div></div> | 2.9% | <div><div></div></div> | 2.7% |
| Singapore | <div><div></div></div> | 2.5% | <div><div></div></div> | 2.1% |
| Hong Kong | <div><div></div></div> | 2.0% | <div><div></div></div> | 1.5% |
| Norway | <div><div></div></div> | 1.9% | <div><div></div></div> | 1.8% |
| Netherlands | <div><div></div></div> | 1.8% | <div><div></div></div> | 0.8% |
| Australia | <div><div></div></div> | 1.7% | <div><div></div></div> | 0.2% |
| Taiwan | <div><div></div></div> | 1.4% | <div><div></div></div> | -0.6% |
| Other | <div><div></div></div> | 6.7% | <div><div></div></div> | -10.8% |

ESG Important information

The sustainability information in this factsheet can help investors integrate sustainability considerations in their process. This information is for informational purposes only. The reported sustainability information may not at all be used in relation to binding elements for this fund. A decision to invest should take into account all characteristics or objectives of the fund as described in the prospectus. The prospectus is available on request and free of charge on the Robeco website.

Sustainability

The fund's sustainable investment objective is to advance the United Nation's Sustainable Development Goals and contribute to keeping global temperature rise well-below 2°C by reducing the carbon footprint of the fund. SDG, climate change and sustainability considerations are incorporated in the investment process via exclusions, ESG integration, ESG and environmental footprint targets as well as engagement and voting. Firstly, the fund does not invest in stock issuers that are in breach of international norms or where activities have been deemed detrimental to society following Robeco's exclusion policy. This includes activity-based exclusions of Article 12 of the EU regulation on Climate Transition Benchmarks, EU Paris-aligned Benchmarks and sustainability-related disclosures for benchmarks. In addition, the fund excludes stocks issued by companies that have a negative impact on the SDGs. The impact of issuers on the SDGs is determined by applying Robeco's internally developed three-step SDG Framework. Secondly, financially material ESG factors are integrated in the portfolio construction to ensure the ESG score of the portfolio is at least 10% better than that of the reference index. By restricting the GHG emissions the carbon footprint of the fund is made lower than that of the Paris-Aligned benchmark to ensure alignment with the desired decarbonization trajectory of 7% year on year. Water use and waste generation are made at least 20% lower than that of the reference index. With these portfolio construction rules, stocks issued by companies with better ESG scores or environmental footprints are more likely to be included in the portfolio while stocks issued by companies with worse ESG scores or environmental footprints are more likely to be divested from the portfolio. Thirdly, where a stock issuer is flagged for breaching international standards in the ongoing monitoring, the issuer will become subject to exclusion. Lastly, the fund makes use of shareholder rights and applies proxy voting in accordance with Robeco's proxy voting policy.

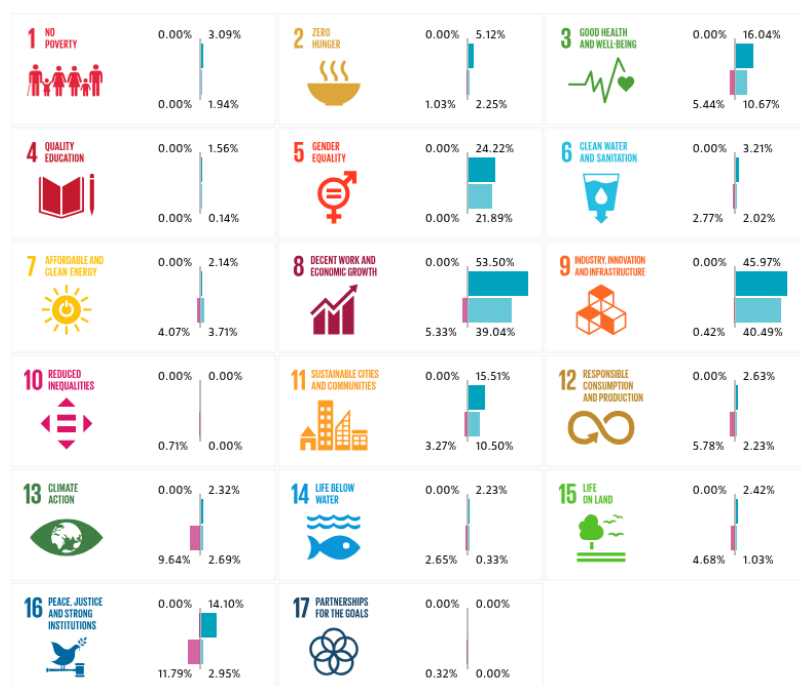
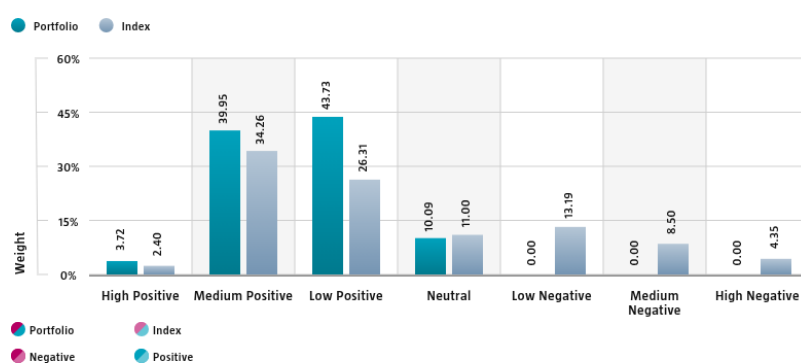
For more information please visit the sustainability-related disclosures.

The index used for all sustainability visuals is based on MSCI All Country World Index (Net Return, EUR).

SDG Impact Alignment

This distribution across SDG scores shows the portfolio weight allocated to companies with a positive, negative and neutral impact alignment with the Sustainable Development Goals (SDG) based on Robeco's SDG Framework. The framework utilizes a three-step approach to assess a company's impact alignment with the relevant SDGs and assign a total SDG score. The score ranges from positive to negative impact alignment with levels from high, medium or low impact alignment. This results in a 7-step scale from -3 to +3. For comparison, index figures are provided alongside that of the portfolio. Only holdings mapped as corporates are included in the figures.

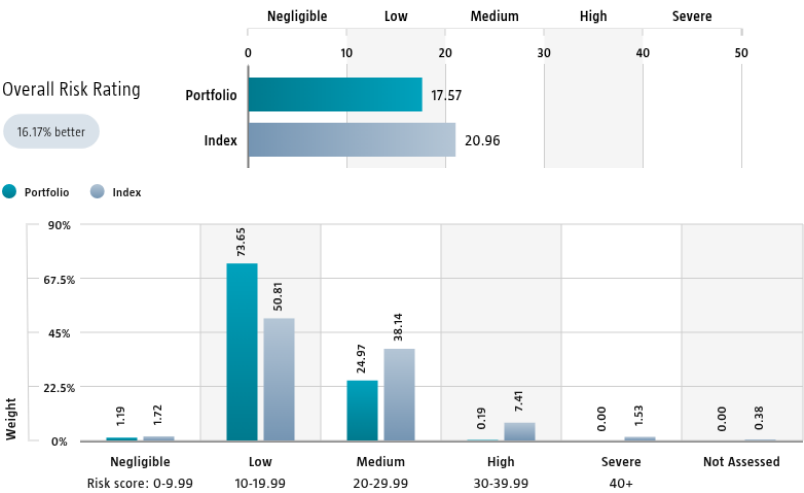
Use of the United Nations Sustainable Development Goals (SDG) logos, including the colour wheel, and icons shall only serve explanatory and illustrative purposes and may not be interpreted as an endorsement by the United Nations of this entity, or the product(s) or service(s) mentioned in this document. The opinions or interpretations shown in this document hence do not reflect the opinion or interpretations of the United Nations.



Source: Robeco. Data derived from internal processes.

Sustainalytics ESG Risk Rating

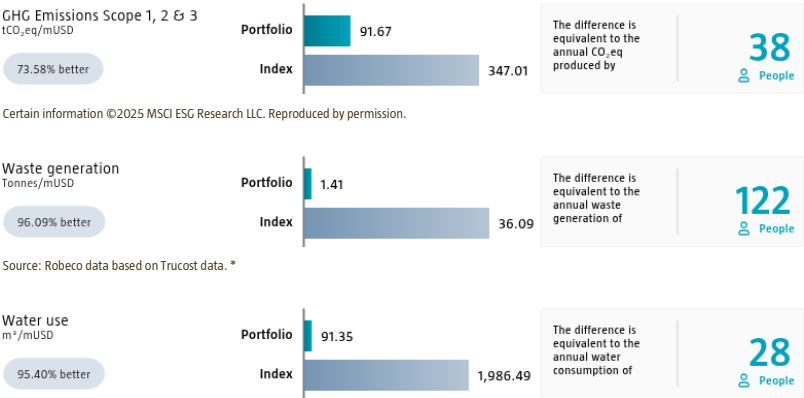
The Portfolio Sustainalytics ESG Risk Rating chart displays the portfolio's ESG Risk Rating. This is calculated by multiplying each portfolio component's Sustainalytics ESG Risk Rating by its respective portfolio weight. The Distribution across Sustainalytics ESG Risk levels chart shows the portfolio allocations broken into Sustainalytics' five ESG risk levels: negligible (0-10), low (10-20), medium (20-30), high (30-40) and severe (40+), providing an overview of portfolio exposure to the different ESG risk levels. Index scores are provided alongside the portfolio scores, highlighting the portfolio's ESG risk level compared to the index. Only holdings mapped as corporates are included in the figures.



Source: Copyright ©2025 Sustainalytics. All rights reserved.

Environmental Footprint

Environmental footprint expresses the total resource consumption of the portfolio per mUSD invested. Each assessed company's footprint is calculated by normalizing resources consumed by the company's enterprise value including cash (EVIC). We aggregate these figures to portfolio level using a weighted average, multiplying each assessed portfolio constituent's footprint by its respective position weight. For comparison, index footprints are shown besides that of the portfolio. The equivalent factors that are used for comparison between the portfolio and index represent European averages and are based on third-party sources combined with own estimates. As such, the figures presented are intended for illustrative purposes and are purely an indication. Only holdings mapped as corporates are included in the figures.



Source: Robeco data based on Trucost data. *

* Source: S&P Global Market Intelligence data © Trucost 2025. All rights in the Trucost data and reports vest in Trucost and/or its licensors. Neither S&P Global Market Intelligence, nor its affiliates, nor its licensors accept any liability for any errors, omissions or interruptions in the Trucost data and/or reports. No further distribution of the Data and/or Reports is permitted without S&P Global Market Intelligence's express written consent. Reproduction of any information, data or material, including ratings is prohibited. The content is not a recommendation to buy, sell or hold such investment or security, nor does it address suitability of an investment or security and should not be relied on as investment advice.

Engagement

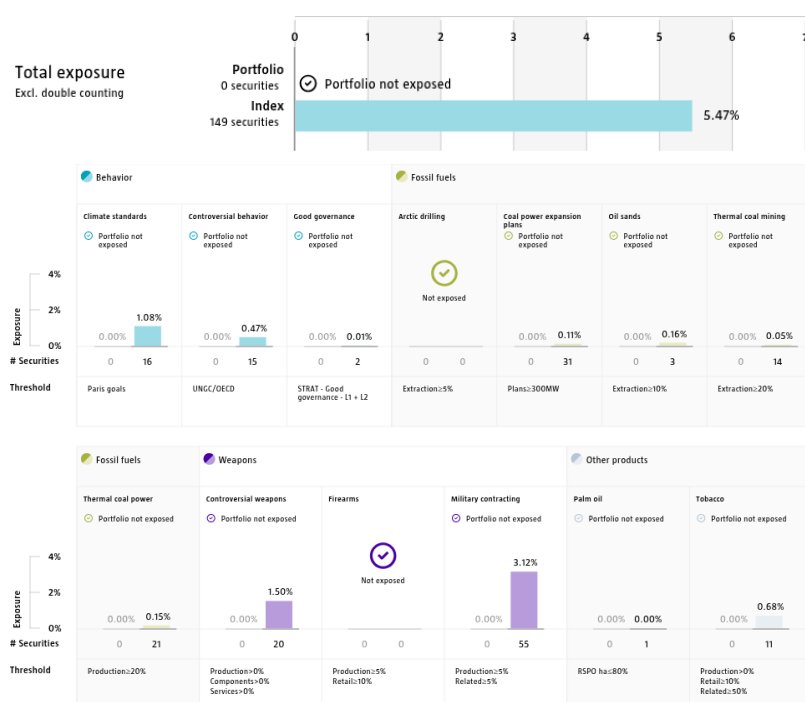
Robeco distinguishes between three types of engagement. Value Engagement focuses on long-term issues that are financially material and/or are causing adverse sustainability impacts. The themes can be broken into Environmental, Social, Governance, or Voting-related. SDG Engagement aims to drive a clear and measurable improvement in a company's SDG contribution. Enhanced engagement is triggered by misconduct and focuses on companies severely breaching international standards. The report is based on all companies in the portfolio for which engagement activities have taken place during the past 12 months. Note that companies may be under engagement in multiple categories simultaneously. While the total portfolio exposure excludes double counting, it may not equal the sum of individual category exposures.

| | Portfolio exposure | # companies engaged with | # activities with companies engaged with |
|-------------------------------------|--------------------|--------------------------|--|
| Total (* excluding double counting) | 19.37% | 17 | 61 |
| Environmental | 5.12% | 5 | 13 |
| Social | 2.94% | 3 | 8 |
| Governance | 4.98% | 3 | 10 |
| Sustainable Development Goals | 6.88% | 6 | 28 |
| Voting Related | 1.71% | 2 | 2 |
| Enhanced | 0.00% | 0 | 0 |

Source: Robeco. Data derived from internal processes.

Exclusions

The Exclusions charts display the degree of adherence to exclusion applied by Robeco. For reference, index exposures are shown beside that of the portfolio. Thresholds are based on revenues unless otherwise indicated. For more information about the exclusion policy and which level applies, please refer to the Exclusion Policy and Exclusion List available on Robeco.com.



Source: We use several data sources such as Sustainalytics, RSPO (Roundtable on Sustainable Palm Oil), World Bank, Freedom House, Fund for Peace and International Sanctions; further policy document available [Exclusion Policy](#)

Investment policy

Robeco QI Global SDG & Climate Conservative Equities is an actively managed fund that invests globally in stocks of companies that advance the United Nations Sustainable Development Goals (SDGs) and pursue a carbon reduction objective. The selection of these stocks is based on a quantitative model. This fund includes a carbon offsetting share class which compensates for the residual footprint of the portfolio by purchasing carbon credits.

The fund has sustainable investment as its objective within the meaning of Article 9 of the European Sustainable Finance Disclosure Regulation. The fund invests in companies whose business models and operational practices are aligned with targets defined by the 17 SDGs. The fund aims to reduce the carbon footprint of the portfolio aligned with the MSCI All Country World Climate Paris Aligned Index and thereby contribute towards the goals of the Paris agreement to keep the maximum global temperature rise well-below 2° C. The fund integrates ESG (Environmental, Social and Governance) factors in the investment process and applies Robeco's Good Governance policy. The fund applies sustainability indicators, including but not limited to, normative, activity-based exclusions in line with Article 12 of the EU regulation on Climate Transition Benchmarks and region-based exclusions, and proxy voting.

Fund manager's CV

Pim van Vliet is Head of Conservative Equities and Chief Quant Strategist. As Head of Conservative Equities, he is responsible for a wide range of global, regional, and sustainable low-volatility strategies. He specializes in low-volatility investing, asset pricing, and quantitative finance. He is the author of numerous academic research papers including publications in the Journal of Banking and Finance, Management Science, and the Journal of Portfolio Management. Pim is a guest lecturer at several universities, author of an investment book and speaker at international seminars. He became Portfolio Manager in 2010. Pim joined Robeco in 2005 as a Researcher with responsibility for asset allocation research. Pim holds a PhD and a Master's cum laude in Financial and Business Economics from Erasmus University Rotterdam. Arlette van Ditschneider is Portfolio Manager Quantitative Equities. She has been portfolio manager since 2007. Arlette's areas of expertise are portfolio construction and risk management. She chairs Robeco's Equity Risk Maarten Polfliet is Portfolio Manager Quantitative Equities. Maarten specializes in portfolio construction and investment style analysis. Until 2014, Maarten was a Quant Client Portfolio Manager at Robeco. From 2002, he was Equity Portfolio Manager at Bank Insinger de Beaufort, until he joined Robeco in 2005. He started his career as a Portfolio Manager for private and institutional clients at SNS Bank Nederland in 1999. He has a Master's in Financial Economics from Tilburg University and a Master's in Financial Analysis from the University of Amsterdam. Jan Sytze Mosselaar is Portfolio Manager Quantitative Equities. He is responsible for quant equity strategies and specializes in quantitative stock selection as well as portfolio and market analysis. Jan Sytze is the author of 'A Concise Financial History of Europe', published by Robeco. He started his career in 2004 at Robeco and worked for ten years as a multi-asset portfolio manager, responsible for multi-asset funds, quant allocation funds and fiduciary pension mandates. He holds a Master's in Business Economics with a specialization in Finance & Investments from the University of Groningen. He is a CFA® Charterholder. Arnoud Klep is Portfolio Manager Quantitative Equities. Arnoud specializes in portfolio construction and sustainability integration within quantitative equities. Previously, Arnoud was Head of Structured Investments with Robeco, managing various quantitative investment strategies. He started his career in the Robeco Quantitative Research department in 2001. Arnoud holds a Master's in Econometrics from Tilburg University.

Fiscal product treatment

The fund is established in Luxembourg and is subject to the Luxembourg tax laws and regulations. The fund is not liable to pay any corporation, income, dividend or capital gains tax in Luxembourg. The fund is subject to an annual subscription tax ('tax d'abonnement') in Luxembourg, which amounts to 0.01% of the net asset value of the fund. This tax is included in the net asset value of the fund. The fund can in principle use the Luxembourg treaty network to partially recover any withholding tax on its income.

Sustainability images

The figures shown in the sustainability visuals are calculated on subfund level.

MSCI disclaimer

Source MSCI. MSCI makes no express or implied warranties or representations and shall have no liability whatsoever with respect to any MSCI data contained herein. The MSCI data may not be further redistributed or used as a basis for other indices or any securities or financial products. This report is not approved, endorsed, reviewed or produced by MSCI. None of the MSCI data is intended to constitute investment advice or a recommendation to make (or refrain from making) any kind of investment decision and may not be relied on as such.

Morningstar

Copyright © Morningstar Benelux. All Rights Reserved. The information contained herein: (1) is proprietary to Morningstar and/or its content providers; (2) may not be copied or distributed; and (3) is not warranted to be accurate, complete or timely. Neither Morningstar nor its content providers are responsible for any damages or losses arising from any use of this information. Past performance is no guarantee of future results. For more information on Morningstar, please refer to www.morningstar.com

Febelfin disclaimer

The fact that the sub-fund has obtained this label does not mean that it meets your personal sustainability goals or that the label is in line with requirements arising from any future national or European rules. The label obtained is valid for one year and subject to annual reappraisal. For further information on this label, please visit www.towardssustainability.be.



Sustainalytics disclaimer

The information, methodologies, data and opinions contained or reflected herein are proprietary of Sustainalytics and/or third parties, intended for internal, non-commercial use, and may not be copied, distributed or used in any way, including via citation, unless otherwise explicitly agreed in writing. They are provided for informational purposes only and (1) do not constitute investment advice; (2) cannot be interpreted as an offer or indication to buy or sell securities, to select a project or make any kind of business transactions; (3) do not represent an assessment of the issuer's economic performance, financial obligations nor of its creditworthiness; (4) are not a substitute for a professional advice; (5) past performance is no guarantee of future results. These are based on information made available by third parties, subject to continuous change and therefore are not warranted as to their merchantability, completeness, accuracy or fitness for a particular purpose. The information and data are provided "as is" and reflect Sustainalytics' opinion at the date of their elaboration and publication. Sustainalytics nor any of its third-party suppliers accept any liability for damage arising from the use of the information, data or opinions contained herein, in any manner whatsoever, except where explicitly required by law. Any reference to third party names is for appropriate acknowledgement of their ownership and does not constitute a sponsorship or endorsement by such owner. Insofar as applicable, researched companies referred herein may have a relationship with different Sustainalytics' business units. Sustainalytics has put in place adequate measures to safeguard the objectivity and independence of its opinions. For more information, contact compliance@sustainalytics.com.

Disclaimer

This document is exclusively distributed in Switzerland to qualified investors as such terms are defined under the Swiss Collective Investment Schemes Act (CISA) by ACOLIN Fund Services AG which is authorized by the Swiss Financial Market Supervisory Authority FINMA as Swiss representative of the Fund(s) and UBS Switzerland AG, Bahnhofstrasse 45, 8001 Zürich, postal address: Europastrasse 2, P.O. Box, CH-8152 Opfikon, as Swiss paying agent. The Prospectus, the Key Information Documents (PRIIPS), the Articles of Association, the annual and semi-annual reports of the Fund(s), as well as the list of the purchases and sales which the Fund(s) has undertaken during the financial year, may be obtained, on simple request and free of charge, at the head office of the Swiss representative ACOLIN Fund Services AG, Maintower Thurgauerstrasse 36/38 8050 Zurich, Switzerland. If the currency in which the past performance is displayed differs from the currency of the country in which you reside, then you should be aware that due to exchange rate fluctuations the performance shown may increase or decrease if converted into your local currency. The value of the investments may fluctuate. Past performance is no guarantee of future results. The performance data do not take account of the commissions and costs incurred on the issue and redemption of units. Unless otherwise stated, performances are i) net of fees based on transaction prices and ii) with dividends reinvested. Please refer to the prospectus of the funds for further details. The prospectus can be obtained free of charge from the representative and are available. The ongoing charges mentioned in this publication is the one stated in the fund's latest annual report at closing date of the last calendar year. The material and information in this document are provided "as is" and without warranties of any kind, either expressed or implied. ACOLIN Fund Services AG and its related, affiliated and subsidiary companies disclaim all warranties, expressed or implied, including, but not limited to, implied warranties of merchantability and fitness for a particular purpose. All information contained in this document is distributed with the understanding that the authors, publishers and distributors are not rendering legal, accounting or other professional advice or opinions on specific facts or matters and accordingly assume no liability whatsoever in connection with its use. In no event shall ACOLIN Fund Services AG and its related, affiliated and subsidiary companies be liable for any direct, indirect, special, incidental or consequential damages arising out of the use of any opinion or information expressly or implicitly contained in this document. Robeco Institutional Asset Management B.V. (Robeco) has a license as manager of Undertakings for Collective Investment in Transferable Securities (UCITS) and Alternative Investment Funds (AIFs) ("Fund(s)") from The Netherlands Authority for the Financial Markets in Amsterdam. Robeco is subject to limited regulation in the UK by the Financial Conduct Authority. Details about the extent of our regulation by the Financial Conduct Authority are available from us on request.