

Robeco Global Engagement Equities DH EUR

Robeco Global SDG Engagement Equities is an actively managed fund that invests in a concentrated selection of global stocks. Stock selection is based on fundamental analysis to invest in companies based on their contribution to the United Nations Sustainable Development Goals (UN SDGs). The fund actively engages with the invested companies and initiates a dialogue to motivate these companies to improve their fulfilment of the UN SDGs over three to five years. The portfolio is built on the basis of an eligible investment universe and an internally developed SDG framework for mapping and measuring SDG contributions (information can be obtained via the website www.robeco.com/si). The fund also aims to achieve a better return than the index.



Thomas Globe, Michiel Plakman CFA, Daniela da Costa, Peter van der Werf
Fund manager since 06-07-2021

Performance

	Fund	Index
1 m	0.97%	1.59%
3 m	5.14%	7.37%
Ytd	5.20%	9.46%
1 Year	7.08%	13.12%
2 Years	12.70%	17.09%
3 Years	10.75%	14.72%
Since 07-2021	3.01%	7.69%

Annualized (for periods longer than one year)

Note: due to a difference in measurement period between the fund and the index, performance differences may arise. For further info, see last page.

Calendar year performance

	Fund	Index
2024	12.78%	19.35%
2023	22.04%	19.27%
2022	-24.55%	-17.50%
2022-2024	1.26%	5.51%

Annualized (years)

Index

MSCI All Country World Index (hedged into EUR)

General facts

Type of fund	Equities
Currency	EUR
Total size of fund	EUR 717,473,204
Size of share class	EUR 3,387
Outstanding shares	30
1st quotation date	27-07-2021
Close financial year	31-12
Ongoing charges	1.71%
Daily tradable	Yes
Dividend paid	No
Ex-ante tracking error limit	-
Management company	Robeco Institutional Asset Management B.V.

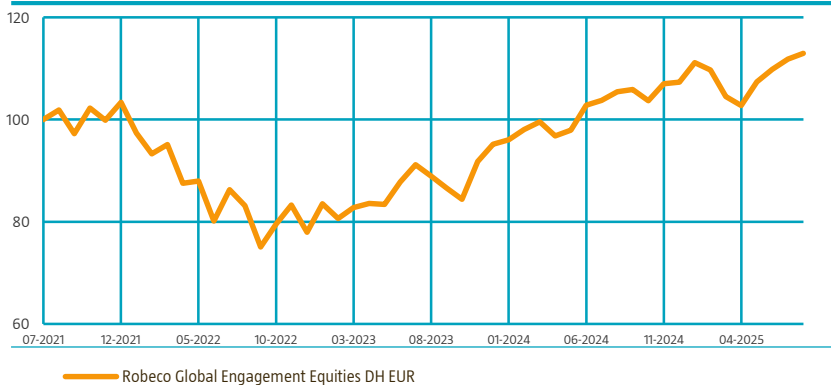
Sustainability profile

- Exclusions++
- ESG Integration
- Voting
- ESG Target

For more information on exclusions see <https://www.robeco.com/exclusions/>
For more information on target universe methodology see <https://www.robeco.com/si>

Performance

Indexed value (until 31-08-2025) - Source: Robeco



Performance

Based on transaction prices, the fund's return was 0.97%.

In August, the portfolio slightly underperformed versus the MSCI ACWI benchmark with a small negative return. Financials led contributions, boosted by Brazilian bank BTG Pactual, which reported strong earnings and saw a significant share price surge. SMFG performed well alongside the broader Japanese market. Consumer discretionary followed, driven by AutoZone and Sony's gaming division. Industrials detracted, with Hitachi and Trane Technologies facing mixed results and negative market reactions.

Market development

August saw further positive returns from the major indices, although to a less exuberant level than in the previous month. Once again, geopolitical events were moving markets with tariff postponements, while non-farm payrolls were weaker, raising fears of a weakening US economy and, as per usual, the Fed was being closely watched. Powell's Jackson Hole speech was carefully dissected, with the expectation now being that the September meeting will see a rate cut.

Expectation of fund manager

There is strong market expectation for a Federal Reserve rate cut in September 2025, driven by softening labor data and political pressures. However, some analysts caution the odds are closer to even, due to inflation concerns and economic resilience. Fed Chair Powell hinted rate cuts may be warranted but emphasized a cautious approach amid uncertainties, signaling a potentially cautious and data-driven easing cycle ahead.

Top 10 largest positions

The five top positions during the month were Broadcom Inc., Meta, Amazon, Sumitomo Mitsui Financial Group and Hitachi.

Fund price

31-08-25	EUR	112.91
High Ytd (15-08-25)	EUR	113.93
Low Ytd (07-04-25)	EUR	92.50

Fees

Management fee	1.50%
Performance fee	None
Service fee	0.16%

Legal status

Investment company with variable capital incorporated under Luxembourg law (SICAV)
 Issue structure Open-end
 UCITS V Yes
 Share class DH EUR
 This fund is a subfund of Robeco Capital Growth Funds, SICAV.

Registered in

Austria, France, Germany, Italy, Luxembourg, Netherlands, Singapore, Spain, Switzerland, United Kingdom

Currency policy

The fund is allowed to pursue an active currency policy to generate extra returns and can engage in currency hedging transactions.

Risk management

Risk management is fully integrated into the investment process to ensure that positions always meet predefined guidelines.

Dividend policy

The fund does not distribute dividend. The fund retains any income that is earned and so its entire performance is reflected in its share price.

Fund codes

ISIN	LU2365448856
Bloomberg	ROGSEDH LX
Valoren	112847732

Top 10 largest positions

Holdings	Sector	%
Broadcom Inc	Semiconductors & Semiconductor Equipment	5.60
Meta Platforms Inc	Interactive Media & Services	4.78
Amazon.com Inc	Multiline Retail	4.52
Sumitomo Mitsui Financial Group Inc	Banks	3.99
Hitachi Ltd	Industrial Conglomerates	3.76
AbbVie Inc	Biotechnology	3.75
Advanced Micro Devices Inc	Semiconductors & Semiconductor Equipment	3.75
Nasdaq Inc	Capital Markets	3.74
Capital One Financial Corp	Consumer Finance	3.56
Apple Inc	Technology Hardware, Storage & Peripherals	3.54
Total		40.99

Top 10/20/30 weights

TOP 10	40.99%
TOP 20	70.56%
TOP 30	94.30%

Statistics

	3 Years
Tracking error ex-post (%)	3.66
Information ratio	-0.57
Sharpe ratio	0.73
Alpha (%)	-1.79
Beta	1.00
Standard deviation	13.29
Max. monthly gain (%)	8.91
Max. monthly loss (%)	-9.53

Above mentioned ratios are based on gross of fees returns

Hit ratio

	3 Years
Months outperformance	17
Hit ratio (%)	47.2
Months Bull market	23
Months outperformance Bull	11
Hit ratio Bull (%)	47.8
Months Bear market	13
Months Outperformance Bear	6
Hit ratio Bear (%)	46.2

Above mentioned ratios are based on gross of fees returns.

Asset Allocation

Asset allocation		
Equity		98.3%
Cash		1.7%

Sector allocation

We do not aim to have large deviations on a sector level. There are sectors where the SDG scores tend to be higher (such as in healthcare, for instance). In those sectors, it may be harder to find candidates for the fund. We are underweight in energy and utilities, because in these sectors it is hard to find candidates that fit the purpose of the fund.

Sector allocation		Deviation index	
Semiconductors & Semiconductor Equipment	9.3%		-1.1%
Capital Markets	9.2%		5.9%
Interactive Media & Services	7.8%		2.5%
Software	6.1%		-1.7%
Specialty Retail	5.9%		4.4%
Biotechnology	5.5%		4.1%
Machinery	5.5%		3.7%
Pharmaceuticals	5.4%		1.8%
Multiline Retail	4.5%		1.0%
Oil, Gas & Consumable Fuels	4.4%		1.0%
Banks	4.0%		-3.9%
Industrial Conglomerates	3.8%		3.0%
Other	28.7%		-20.3%

Regional allocation

We have an overweight in Europe and in emerging markets, and are underweight in North America and in Asia-Pacific. The regional deviations are largely the effect of bottom-up stock picking.

Regional allocation		Deviation index	
America	61.9%		-6.4%
Europe	20.7%		6.0%
Asia	15.7%		0.0%
Africa	1.7%		1.4%
Middle East	0.0%		-0.9%

Currency allocation

We use currency hedging only selectively to hedge currencies back to the benchmark. We aim to have our performance attribution come from bottom-up stock picking and less so from sector allocation.

Currency allocation		Deviation index	
Euro	100.2%		92.4%
U.S. Dollar	-2.5%		-67.6%
Indian Rupee	2.1%		0.4%
Swedish Kroner	0.1%		-0.6%
Japanese Yen	-0.1%		-5.0%
Hong Kong Dollar	0.1%		-2.9%
Brasilian Real	0.1%		-0.3%
Mexico New Peso	0.0%		-0.2%
Korean Won	0.0%		-1.1%
Pound Sterling	0.0%		-3.3%
South African Rand	0.0%		-0.3%
Australian Dollar	0.0%		-1.5%
Other	0.0%		-10.0%

ESG Important information

The sustainability information in this factsheet can help investors integrate sustainability considerations in their process. This information is for informational purposes only. The reported sustainability information may not at all be used in relation to binding elements for this fund. A decision to invest should take into account all characteristics or objectives of the fund as described in the prospectus. The prospectus is available on request and free of charge on the Robeco website.

Sustainability

The fund incorporates sustainability in the investment process by the means of a target universe, exclusions, ESG integration and engagement. The fund solely invests in stocks issued by companies with a low negative to low positive impact on the SDGs. The impact of issuers on the SDGs is determined by applying Robeco's internally developed three-step SDG Framework. The outcome is a quantified contribution expressed as an SDG score, considering both the contribution to the SDGs (positive, neutral or negative) and the extent of this contribution (high, medium or low). The fund actively engages with 100% of the corporate holdings typically for a period of three to five years. The fund does not invest in stock issuers that are in breach of international norms or where activities have been deemed detrimental to society following Robeco's exclusion policy. Financially material ESG factors are integrated in the bottom-up fundamental investment analysis to assess existing and potential ESG risks and opportunities. In addition, where a stock issuer is flagged for breaching international standards in the ongoing monitoring, the issuer will become subject to exclusion. Lastly, the fund makes use of shareholder rights and applies proxy voting in accordance with Robeco's proxy voting policy.

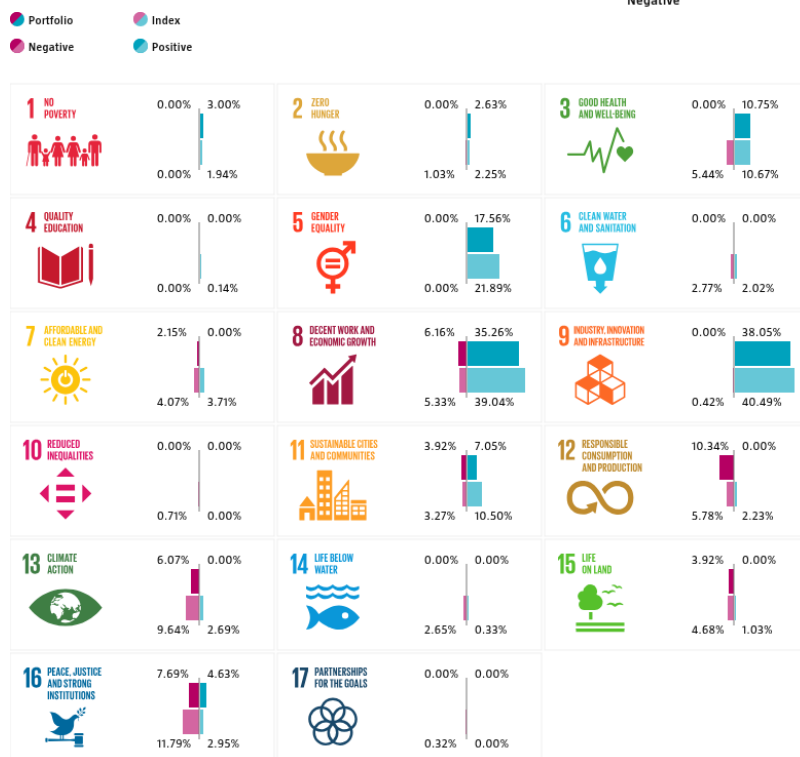
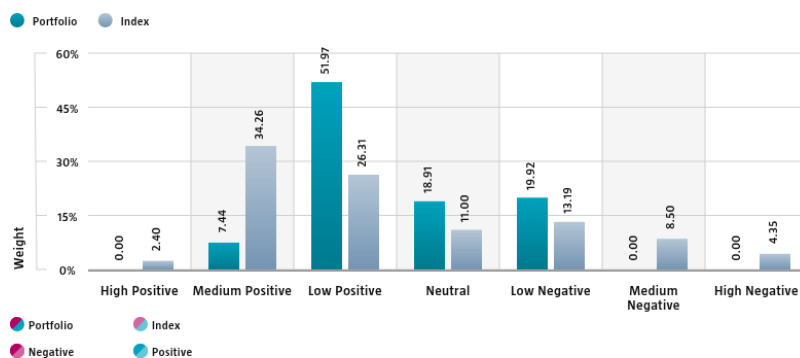
For more information please visit the sustainability-related disclosures.

The index used for all sustainability visuals is based on MSCI All Country World Index (hedged into EUR).

SDG Impact Alignment

This distribution across SDG scores shows the portfolio weight allocated to companies with a positive, negative and neutral impact alignment with the Sustainable Development Goals (SDG) based on Robeco's SDG Framework. The framework utilizes a three-step approach to assess a company's impact alignment with the relevant SDGs and assign a total SDG score. The score ranges from positive to negative impact alignment with levels from high, medium or low impact alignment. This results in a 7-step scale from -3 to +3. For comparison, index figures are provided alongside that of the portfolio. Only holdings mapped as corporates are included in the figures.

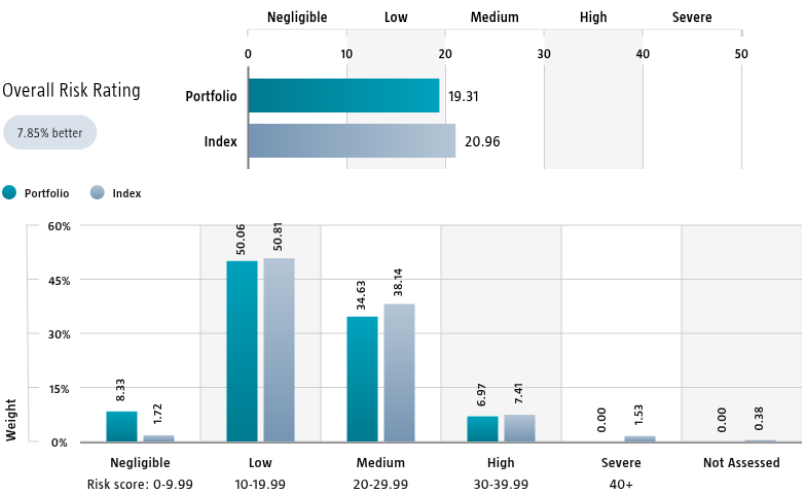
Use of the United Nations Sustainable Development Goals (SDG) logos, including the colour wheel, and icons shall only serve explanatory and illustrative purposes and may not be interpreted as an endorsement by the United Nations of this entity, or the product(s) or service(s) mentioned in this document. The opinions or interpretations shown in this document hence do not reflect the opinion or interpretations of the United Nations.



Source: Robeco. Data derived from internal processes.

Sustainalytics ESG Risk Rating

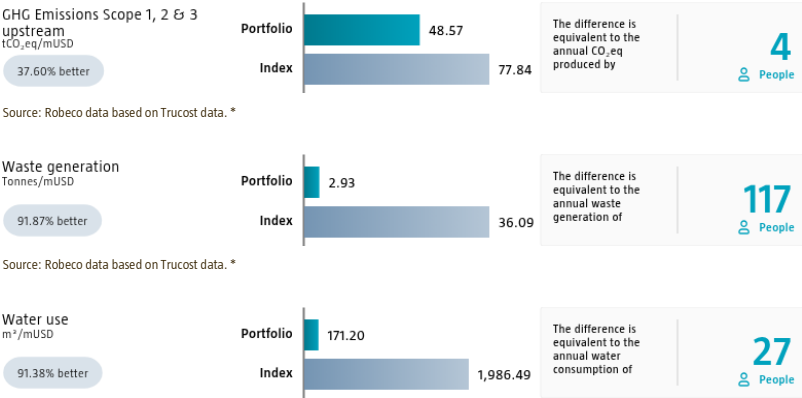
The Portfolio Sustainalytics ESG Risk Rating chart displays the portfolio's ESG Risk Rating. This is calculated by multiplying each portfolio component's Sustainalytics ESG Risk Rating by its respective portfolio weight. The Distribution across Sustainalytics ESG Risk levels chart shows the portfolio allocations broken into Sustainalytics' five ESG risk levels: negligible (0-10), low (10-20), medium (20-30), high (30-40) and severe (40+), providing an overview of portfolio exposure to the different ESG risk levels. Index scores are provided alongside the portfolio scores, highlighting the portfolio's ESG risk level compared to the index. Only holdings mapped as corporates are included in the figures.



Source: Copyright ©2025 Sustainalytics. All rights reserved.

Environmental Footprint

Environmental footprint expresses the total resource consumption of the portfolio per mUSD invested. Each assessed company's footprint is calculated by normalizing resources consumed by the company's enterprise value including cash (EVIC). We aggregate these figures to portfolio level using a weighted average, multiplying each assessed portfolio constituent's footprint by its respective position weight. For comparison, index footprints are shown besides that of the portfolio. The equivalent factors that are used for comparison between the portfolio and index represent European averages and are based on third-party sources combined with own estimates. As such, the figures presented are intended for illustrative purposes and are purely an indication. Only holdings mapped as corporates are included in the figures.



Source: Robeco data based on Trucost data. *

* Source: S&P Global Market Intelligence data © Trucost 2025. All rights in the Trucost data and reports vest in Trucost and/or its licensors. Neither S&P Global Market Intelligence, nor its affiliates, nor its licensors accept any liability for any errors, omissions or interruptions in the Trucost data and/or reports. No further distribution of the Data and/or Reports is permitted without S&P Global Market Intelligence's express written consent. Reproduction of any information, data or material, including ratings is prohibited. The content is not a recommendation to buy, sell or hold such investment or security, nor does it address suitability of an investment or security and should not be relied on as investment advice.

Engagement

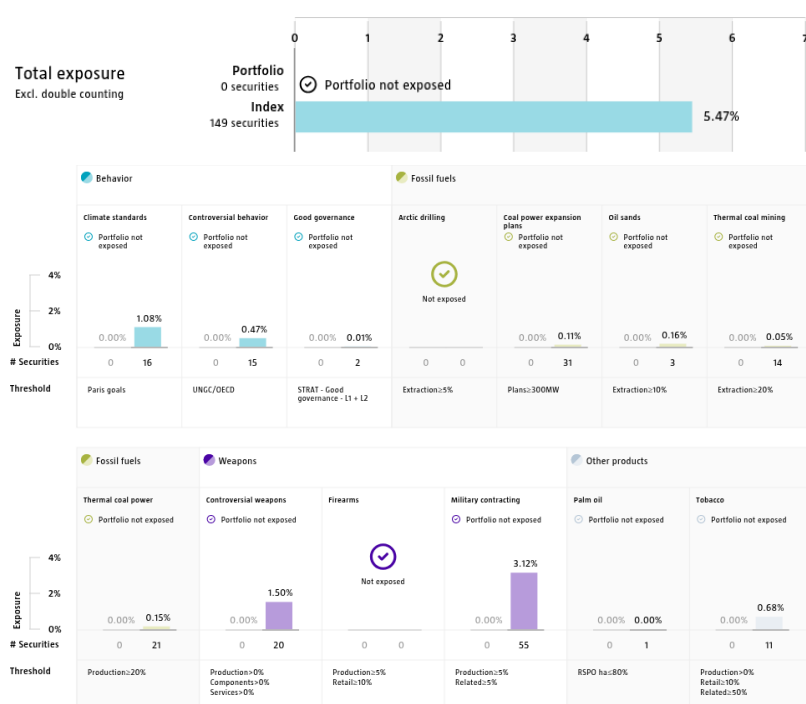
Robeco distinguishes between three types of engagement. Value Engagement focuses on long-term issues that are financially material and/or are causing adverse sustainability impacts. The themes can be broken into Environmental, Social, Governance, or Voting-related. SDG Engagement aims to drive a clear and measurable improvement in a company's SDG contribution. Enhanced engagement is triggered by misconduct and focuses on companies severely breaching international standards. The report is based on all companies in the portfolio for which engagement activities have taken place during the past 12 months. Note that companies may be under engagement in multiple categories simultaneously. While the total portfolio exposure excludes double counting, it may not equal the sum of individual category exposures.

	Portfolio exposure	# companies engaged with	# activities with companies engaged with
Total (* excluding double counting)	88.86%	31	148
Environmental	2.17%	1	1
Social	3.00%	1	4
Governance	5.45%	2	5
Sustainable Development Goals	88.86%	31	138
Voting Related	0.00%	0	0
Enhanced	0.00%	0	0

Source: Robeco. Data derived from internal processes.

Exclusions

The Exclusions charts display the degree of adherence to exclusion applied by Robeco. For reference, index exposures are shown beside that of the portfolio. Thresholds are based on revenues unless otherwise indicated. For more information about the exclusion policy and which level applies, please refer to the Exclusion Policy and Exclusion List available on Robeco.com.



Source: We use several data sources such as Sustainalytics, RSPO (Roundtable on Sustainable Palm Oil), World Bank, Freedom House, Fund for Peace and International Sanctions; further policy document available [Exclusion Policy](#)

Investment policy

Robeco Global SDG Engagement Equities is an actively managed fund that invests in a concentrated selection of global stocks. Stock selection is based on fundamental analysis to invest in companies based on their contribution to the United Nations Sustainable Development Goals (UN SDGs). The fund actively engages with the invested companies and initiates a dialogue to motivate these companies to improve their fulfilment of the UN SDGs over three to five years. The portfolio is built on the basis of an eligible investment universe and an internally developed SDG framework for mapping and measuring SDG contributions (information can be obtained via the website www.robeco.com/si). The fund also aims to achieve a better return than the index. The fund promotes E&S (i.e. Environmental and Social) characteristics within the meaning of Article 8 of the European Sustainable Finance Disclosure Regulation, integrates sustainability risks in the investment process and applies Robeco's Good Governance policy. The fund will actively engage with the invested companies and initiate a dialogue to motivate these companies to improve their fulfilment of the United Nations Sustainable Development Goals (UN SDGs) over three to five years via active engagement. The fund applies sustainability indicators, including but not limited to, normative, activity-based and region-based exclusions, and applies proxy voting.

Fund manager's CV

Thomas Globe is a member of the Global Equity team and Deputy Lead Portfolio Manager of Robeco's SDG Engagement Equities strategy. Prior to joining Robeco in 2024, he worked as portfolio manager for Premier Miton Investors with a focus on sustainable global equities. Previous to that, he worked at Premier Asset Management as portfolio manager and analyst. He joined the industry in 2011. Thomas holds a first class Bachelor of Arts (Joint Honours) in Business and Law from Staffordshire University. He is a CFA® Charterholder. Michiel Plakman is Portfolio Manager and Co-Head of Robeco's Global Equity team. He is Lead Portfolio Manager Global Stars Equities and Portfolio Manager Global Engagement Equities. He is responsible for fundamental global equities with a focus on companies in information technology, real estate, communication services and portfolio construction. Before starting this role since 2009, Michiel was responsible for managing the Robeco IT Equities fund within the TMT team. Prior to joining Robeco in 1999, he worked as a Portfolio Manager Japan at Achmea Global Investors (PVF Pensioen). From 1995 to 1996 he was Portfolio Manager European Equities at KPN Pension Fund. Michiel holds a Master's in Econometrics from Vrije Universiteit Amsterdam and is a CFA® Charterholder. Daniela da Costa is co-portfolio manager of Robeco's Global SDG Engagement fund and has a research focus on Brazil and the African consumer sector. Prior to joining Robeco in 2010, she was Portfolio Manager Latin American Equities at Nomura in London. Before that, Daniela worked at HSBC and with the Petrobras pension fund in Brazil. She started her career in the industry in 1997. Daniela holds a Master's in Economics from the Brazilian Capital Markets Institute in Rio de Janeiro (IBMEC-RJ) and a MBA certificate in pension fund asset management from the Federal University of Rio de Janeiro (COPPE-UFRJ). She is board member of AMEC, the Brazilian stewardship agency and a member of Robeco's SDG committee and Biodiversity Task Force. Peter van der Werf is Head of Active Ownership at Robeco. He leads the corporate and sovereign engagement program in the Active Ownership team and is involved in further integration of active ownership in Robeco's investment products. With his engagement work he has challenged sustainability leadership at more than 200 global companies to align their environmental and social strategy with Robeco's sustainable investing philosophy. As Portfolio Manager SDG Engagement Equities, Peter contributes to impact investing in listed equity. He is also an Advisory Board member of the Finance for Biodiversity foundation. Peter started his career in 2007 and holds a Master's in Environmental Sciences from Wageningen University.

Fiscal product treatment

The fund is established in Luxembourg and is subject to the Luxembourg tax laws and regulations. The fund is not liable to pay any corporation, income, dividend or capital gains tax in Luxembourg. The fund is subject to an annual subscription tax ('tax d'abonnement') in Luxembourg, which amounts to 0.05% of the net asset value of the fund. This tax is included in the net asset value of the fund. The fund can in principle use the Luxembourg treaty network to partially recover any withholding tax on its income.

Fiscal treatment of investor

The fiscal consequences of investing in this fund depend on the investor's personal situation. For private investors in the Netherlands real interest and dividend income or capital gains received on their investments are not relevant for tax purposes. Each year investors pay income tax on the value of their net assets as at 1 January if and inasmuch as such net assets exceed the investor's tax-free allowance. Any amount invested in the fund forms part of the investor's net assets. Private investors who are resident outside the Netherlands will not be taxed in the Netherlands on their investments in the fund. However, such investors may be taxed in their country of residence on any income from an investment in this fund based on the applicable national fiscal laws. Other fiscal rules apply to legal entities or professional investors. We advise investors to consult their financial or tax adviser about the tax consequences of an investment in this fund in their specific circumstances before deciding to invest in the fund.

Sustainability images

The figures shown in the sustainability visuals are calculated on subfund level.

MSCI disclaimer

Source MSCI. MSCI makes no express or implied warranties or representations and shall have no liability whatsoever with respect to any MSCI data contained herein. The MSCI data may not be further redistributed or used as a basis for other indices or any securities or financial products. This report is not approved, endorsed, reviewed or produced by MSCI. None of the MSCI data is intended to constitute investment advice or a recommendation to make (or refrain from making) any kind of investment decision and may not be relied on as such.

Morningstar

Copyright © Morningstar Benelux. All Rights Reserved. The information contained herein: (1) is proprietary to Morningstar and/or its content providers; (2) may not be copied or distributed; and (3) is not warranted to be accurate, complete or timely. Neither Morningstar nor its content providers are responsible for any damages or losses arising from any use of this information. Past performance is no guarantee of future results. For more information on Morningstar, please refer to www.morningstar.com

Disclaimer

Source: Robeco. As of 31-08-2025, NAV to NAV in denominated currency of the respective share class with dividends re-invested. The performance figures are calculated starting from the first quotation date. ©2025 Morningstar. All Rights Reserved. The information contained here in: (1) is proprietary to Morningstar and/or its content providers; (2) may not be copied or distributed; and (3) is not warranted to be accurate, complete or timely by Morningstar. Neither Morningstar nor its content providers are responsible for any damages or losses arising from any use of this information. Past performance is no indication of current or future performance.

This document is not intended as a recommendation or for the purpose of soliciting any action in relation to the Robeco Capital Growth Funds ("Fund") and should not be construed as an offer to sell shares of the Fund (the "Shares") or solicitation by anyone in any jurisdiction in which such an offer or solicitation is not authorised or to any person to whom it is unlawful to make such an offer and solicitation. While all the information prepared in this document is believed to be accurate, the directors of the Fund and its investment manager makes no representation or warranty, whether express or implied, as to the completeness, reliability or accuracy, nor can it accept responsibility for errors appearing in the document. This document does not constitute any recommendation regarding any securities, futures, derivatives or other investment products. Nothing in this document constitutes accounting, legal, regulatory, tax or other advice. Any decision to subscribe for interests in the Fund must be made solely on the basis of information contained in the prospectus (the "Prospectus"), which information may be different from the information contained in this document, and with independent analyses of your investment and financial situation and objectives. The information contained in this document is qualified in its entirety by reference to the Prospectus, and this document should, at all times, be read in conjunction with the Prospectus. Detailed information on the Fund and associated risks is contained in the Prospectus. Any decision to participate in the Fund should be made only after reviewing the sections regarding investment considerations, conflicts of interest, risk factors and the relevant Singapore selling restrictions (as described in the section entitled "Important Information for Singapore Investors") contained in the Prospectus. You should consult your professional adviser if you are in doubt about the stringent restrictions applicable to the use of this document, regulatory status of the Fund, applicable regulatory protection, associated risks and suitability of the Fund to your objectives. This document is not directed to, or intended for distribution to or use by, any person or entity who is a citizen or resident of or located in any locality, state, country or other jurisdiction where such distribution, publication, availability or use would be contrary to law or regulation or which would subject the Fund and its investment manager to any registration or licensing requirement within such jurisdiction. Investors should note that only the sub-funds listed in the appendix to the section entitled "Important Information for Singapore Investors" of the Prospectus (the "Sub-Funds") are available to Singapore investors. The Sub-Funds are notified as restricted foreign schemes under the Securities and Futures Act, Chapter 289 of Singapore ("SFA") and are invoking the exemptions from compliance with prospectus registration requirements pursuant to the exemptions under Section 304 and Section 305 of the SFA. The Sub-Funds are not authorised or recognised by the Monetary Authority of Singapore and Shares in the Sub-Funds are not allowed to be offered to the retail public in Singapore. The Prospectus of the Fund is not a prospectus as defined in the SFA. Accordingly, statutory liability under the SFA in relation to the content of prospectuses would not apply. The Sub-Funds may only be promoted exclusively to persons who are sufficiently experienced and sophisticated to understand the risks involved in investing in such schemes, and who satisfy certain other criteria provided under Section 304, Section 305 or any other applicable provision of the SFA and the subsidiary legislation enacted thereunder. You should consider carefully whether the investment is suitable for you. This document may contain projections or other forward looking statements regarding future events or future financial performance of countries, markets or companies and such projection or forecast is not indicative of the future or likely performance of the Fund. Neither the Fund, its investment manager nor any of their associates, nor any director, officer or employee accepts any liability whatsoever for any loss arising directly or indirectly from the use of this document. The information contained in this document, including any data, projections and underlying assumptions are based upon certain assumptions, management forecasts and analysis of information available as at the date of this document and reflects prevailing conditions and our views as of the date of the document, all of which are accordingly subject to change at any time without notice and the Fund and its investment manager are under no obligation to notify you of any of these changes. Prospective investors should not view the past performance of the Fund or its investment manager as indicative of future results.