

Robeco Global SDG Equities D EUR

Robeco Global SDG Equities is an actively managed fund that invests globally in companies that take action to advance the UN Sustainable Development Goals. The selection of these stocks is based on fundamental analysis. The fund's objective is to achieve a better return than the index. The strategy integrates sustainability throughout the investment process. It uses an internally developed framework (more information on which can be found at www.robeco.com/si) to identify companies whose products and services create a material positive impact on the SDGs.



Christoph Wolfensberger
Fund manager since 01-09-2021

Performance

	Fund	Index
1 m	-0.82%	0.33%
3 m	1.56%	5.15%
Ytd	-1.91%	0.65%
1 Year	-0.51%	9.39%
2 Years	10.36%	15.53%
3 Years	8.39%	12.65%
5 Years	9.07%	13.38%
Since 12-2017	8.34%	11.26%

Annualized (for periods longer than one year)
Note: due to a difference in measurement period between the fund and the index, performance differences may arise. For further info, see last page.

Calendar year performance

	Fund	Index
2024	20.29%	26.60%
2023	12.74%	19.60%
2022	-13.76%	-12.78%
2021	24.54%	31.07%
2020	4.09%	6.33%
2022-2024	5.36%	9.71%
2020-2024	8.68%	12.98%

Annualized (years)

Index

MSCI World Index TRN

General facts

Morningstar	★★★★
Type of fund	Equities
Currency	EUR
Total size of fund	EUR 172,006,765
Size of share class	EUR 45,464,800
Outstanding shares	244,942
1st quotation date	29-10-2020
Close financial year	31-12
Ongoing charges	1.61%
Daily tradable	Yes
Dividend paid	No
Ex-ante tracking error limit	-
Management company	Robeco Institutional Asset Management B.V.

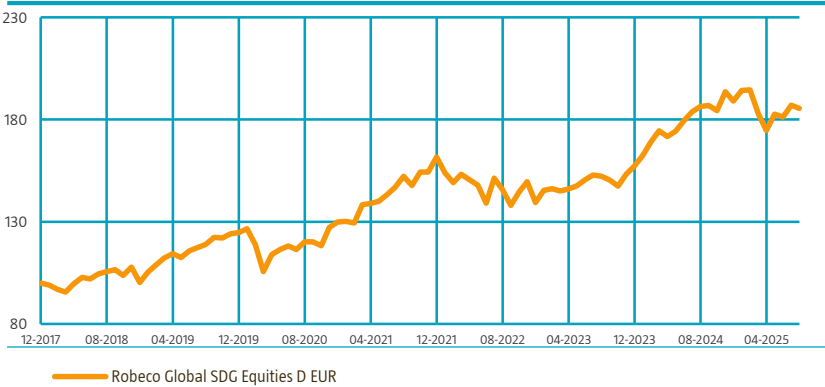
Sustainability profile

- Exclusions++
- ESG Integration
- Voting
- ESG Target

For more information on exclusions see <https://www.robeco.com/exclusions/>
For more information on target universe methodology see <https://www.robeco.com/si>

Performance

Indexed value (until 31-08-2025) - Source: Robeco



Performance

Based on transaction prices, the fund's return was -0.82%.

In August, the fund lagged the MSCI World Index due to negative stock selection in materials, industrials, and information technology, notably lacking Apple. Fortinet detracted despite strong earnings, weighed down by growth concerns. RELX also fell amid AI-related fears. Healthcare selections, led by AstraZeneca's strong results, and industrial stock TopBuild's margin gains, partially offset losses.

Market development

The Federal Reserve is widely expected to cut interest rates in September 2025, driven by softening labor market data and political pressures. Market pricing shows an over 80% chance of a quarter-point cut, with several more cuts anticipated through 2026. However, some analysts caution that the odds are closer to 50-50, due to persistent inflation and economic resilience. Fed Chair Powell has signaled openness to rate cuts but emphasizes a cautious, data-dependent approach amid ongoing uncertainties.

Expectation of fund manager

The economic environment remains challenging with elevated but slightly declining interest rates and uncertain policy paths. Rising geopolitical tensions and a protectionist US trade stance add market uncertainty. Valuations, especially in the US, are high, necessitating strong earnings growth for equities to deliver attractive returns. A bottom-up focus on companies with resilient fundamentals, SDG alignment, and attractive valuations is key, balancing growth and stability amid expected volatility and cyclicity.

Top 10 largest positions

The top ten positions are composed of our highest conviction ideas across various regions and impact areas.

Fund price

31-08-25	EUR	185.61
High Ytd (10-02-25)	EUR	196.95
Low Ytd (08-04-25)	EUR	165.91

Fees

Management fee	1.40%
Performance fee	None
Service fee	0.16%

Legal status

Investment company with variable capital incorporated under Luxembourg law (SICAV)
 Issue structure Open-end
 UCITS V Yes
 Share class D EUR
 This fund is a subfund of Robeco Capital Growth Funds, SICAV.

Registered in

Austria, Belgium, France, Germany, Italy, Netherlands, Portugal, Singapore, Spain, Sweden, Switzerland, United Kingdom

Currency policy

The fund is allowed to pursue an active currency policy to generate extra returns and can engage in currency hedging transactions.

Risk management

Risk management is fully integrated into the investment process to ensure that positions always meet predefined guidelines.

Dividend policy

In principle the fund does not intend to distribute dividend and so both the income earned by the fund and its overall performance are reflected in its share price.

Fund codes

ISIN	LU2145460353
Bloomberg	RSGSEDE LX
WKN	A2QD2L
Valoren	55777796

Top 10 largest positions

Holdings	Sector	%
Microsoft Corp	Software	7.04
NVIDIA Corp	Semiconductors & Semiconductor Equipment	5.92
AstraZeneca PLC	Pharmaceuticals	3.69
Visa Inc	Diversified Financial Services	3.15
Broadcom Inc	Semiconductors & Semiconductor Equipment	2.85
Mastercard Inc	Diversified Financial Services	2.83
Linde PLC	Chemicals	2.78
AbbVie Inc	Biotechnology	2.61
Thermo Fisher Scientific Inc	Life Sciences Tools & Services	2.56
Colgate-Palmolive Co	Household Products	2.56
Total		35.99

Top 10/20/30 weights

TOP 10	35.99%
TOP 20	57.48%
TOP 30	74.20%

Statistics

	3 Years	5 Years
Tracking error ex-post (%)	4.09	4.23
Information ratio	-0.62	-0.59
Sharpe ratio	0.67	0.80
Alpha (%)	-0.48	-0.32
Beta	0.79	0.82
Standard deviation	10.76	11.75
Max. monthly gain (%)	4.97	8.66
Max. monthly loss (%)	-6.66	-6.66

Above mentioned ratios are based on gross of fees returns

Hit ratio

	3 Years	5 Years
Months outperformance	15	26
Hit ratio (%)	41.7	43.3
Months Bull market	25	38
Months outperformance Bull	6	11
Hit ratio Bull (%)	24.0	28.9
Months Bear market	11	22
Months Outperformance Bear	9	15
Hit ratio Bear (%)	81.8	68.2

Above mentioned ratios are based on gross of fees returns.

Changes

This share class shows performance information prior to its launch date. On the launch date of this share class, the fund absorbed Multipartner SICAV - Robeco Global SDG Equities. Performance prior to the launch date has been simulated on the basis of the past performance of the absorbed fund that had similar investment policy and applied higher or comparable charges.

Asset Allocation

Asset allocation		
Equity		98.3%
Cash		1.7%

Sector allocation

The portfolio invests exclusively in companies with a high social and ecological impact. This results in conscious, significant sector weightings. The healthcare, industrials, IT and utilities sectors have the largest allocation. Communication services and energy are most underweight relative to the index.

Sector allocation		Deviation index	
Software	11.2%		2.5%
Semiconductors & Semiconductor Equipment	11.2%		1.2%
Insurance	9.0%		5.8%
Pharmaceuticals	8.0%		4.1%
Diversified Financial Services	6.0%		2.9%
Diversified Telecommunication Services	4.5%		3.5%
Life Sciences Tools & Services	4.3%		3.6%
Banks	4.0%		-2.8%
IT Services	3.4%		2.1%
Commercial Services & Supplies	3.1%		2.5%
Communications Equipment	2.8%		2.1%
Chemicals	2.8%		1.4%
Other	29.8%		-28.7%

Regional allocation

The regional allocation is not managed actively. It is mainly the result of a conscious risk diversification of the portfolio across the main developed economies as well as a bottom-up stock selection. The strategy is underweight in North America (mainly US) and overweight in Europe and Japan.

Regional allocation		Deviation index	
America	71.3%		-4.1%
Europe	22.6%		6.5%
Asia	4.5%		-3.7%
Middle East	1.6%		1.3%

Currency allocation

The currency allocation is not managed actively. It is the result of a conscious risk diversification of the portfolio across the main developed economies as well as a bottom-up stock selection. The strategy is underweight in USD and overweight in EUR and JPY.

Currency allocation		Deviation index	
U.S. Dollar	71.7%		-0.7%
Euro	13.8%		5.2%
Pound Sterling	8.6%		5.0%
Japanese Yen	4.5%		-1.0%
Canadian Dollar	1.5%		-1.8%
Danish Kroner	0.0%		-0.5%
Norwegian Kroner	0.0%		-0.1%
Swedish Kroner	0.0%		-0.8%
Swiss Franc	0.0%		-2.3%
Singapore Dollar	0.0%		-0.4%
Israeli Shekel	0.0%		-0.2%
Other	0.0%		-2.2%

ESG Important information

The sustainability information in this factsheet can help investors integrate sustainability considerations in their process. This information is for informational purposes only. The reported sustainability information may not at all be used in relation to binding elements for this fund. A decision to invest should take into account all characteristics or objectives of the fund as described in the prospectus. The prospectus is available on request and free of charge on the Robeco website.

Sustainability

The fund's sustainable investment objective is to advance the United Nations Sustainable Development Goals (SDGs). SDG and sustainability considerations are incorporated in the investment process by the means of a target universe, exclusions and ESG integration. The fund solely invests in stocks issued by companies with a medium or high positive impact on the SDGs. The impact of issuers on the SDGs is determined by applying Robeco's internally developed three-step SDG Framework. The outcome is a quantified contribution expressed as an SDG score, considering both the contribution to the SDGs (positive, neutral or negative) and the extent of this contribution (high, medium or low). Furthermore, the fund does not invest in stock issuers that are in breach of international norms or where activities have been deemed detrimental to society following Robeco's exclusion policy. Financially material ESG factors are integrated in the bottom-up fundamental investment analysis to assess existing and potential ESG risks and opportunities. In addition, where a stock issuer is flagged for breaching international standards in the ongoing monitoring, the issuer will become subject to exclusion. Lastly, the fund makes use of shareholder rights and applies proxy voting in accordance with Robeco's proxy voting policy.

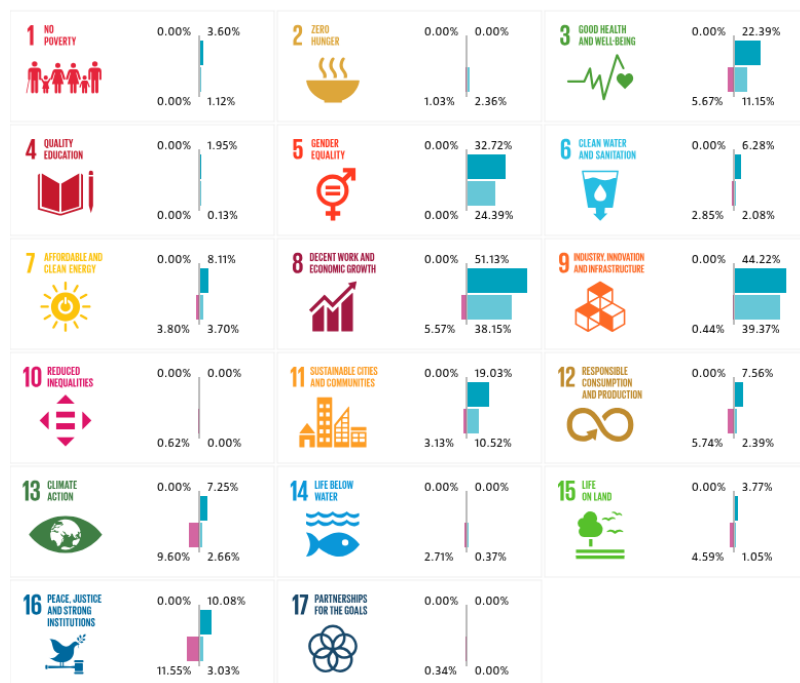
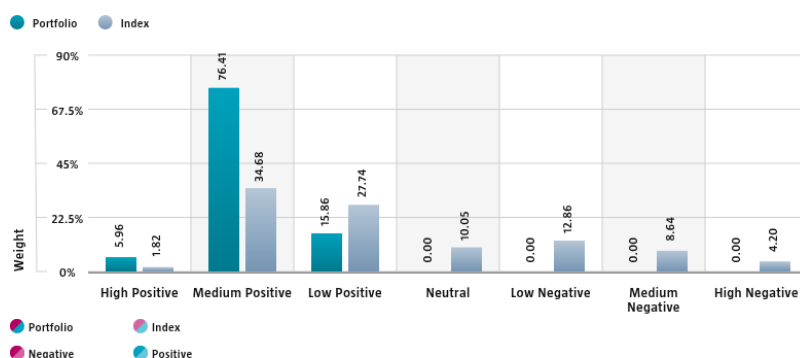
For more information please visit the sustainability-related disclosures.

The index used for all sustainability visuals is based on MSCI World Index TRN.

SDG Impact Alignment

This distribution across SDG scores shows the portfolio weight allocated to companies with a positive, negative and neutral impact alignment with the Sustainable Development Goals (SDG) based on Robeco's SDG Framework. The framework utilizes a three-step approach to assess a company's impact alignment with the relevant SDGs and assign a total SDG score. The score ranges from positive to negative impact alignment with levels from high, medium or low impact alignment. This results in a 7-step scale from -3 to +3. For comparison, index figures are provided alongside that of the portfolio. Only holdings mapped as corporates are included in the figures.

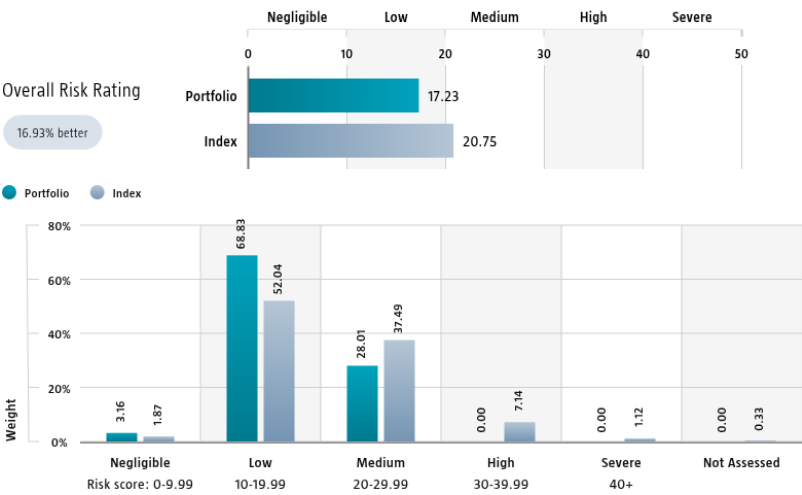
Use of the United Nations Sustainable Development Goals (SDG) logos, including the colour wheel, and icons shall only serve explanatory and illustrative purposes and may not be interpreted as an endorsement by the United Nations of this entity, or the product(s) or service(s) mentioned in this document. The opinions or interpretations shown in this document hence do not reflect the opinion or interpretations of the United Nations.



Source: Robeco. Data derived from internal processes.

Sustainalytics ESG Risk Rating

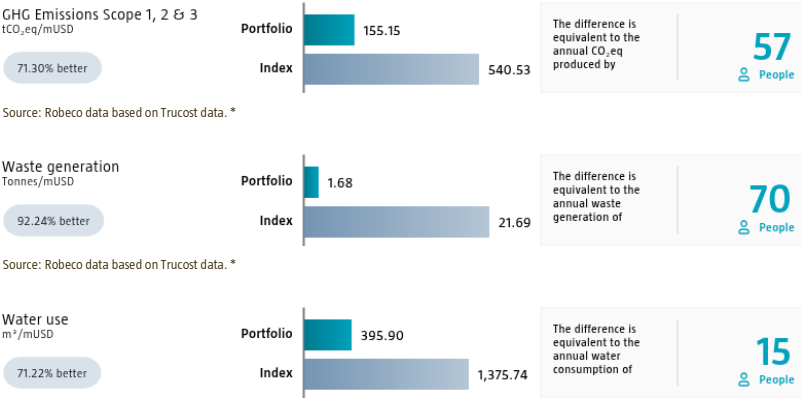
The Portfolio Sustainalytics ESG Risk Rating chart displays the portfolio's ESG Risk Rating. This is calculated by multiplying each portfolio component's Sustainalytics ESG Risk Rating by its respective portfolio weight. The Distribution across Sustainalytics ESG Risk levels chart shows the portfolio allocations broken into Sustainalytics' five ESG risk levels: negligible (0-10), low (10-20), medium (20-30), high (30-40) and severe (40+), providing an overview of portfolio exposure to the different ESG risk levels. Index scores are provided alongside the portfolio scores, highlighting the portfolio's ESG risk level compared to the index. Only holdings mapped as corporates are included in the figures.



Source: Copyright ©2025 Sustainalytics. All rights reserved.

Environmental Footprint

Environmental footprint expresses the total resource consumption of the portfolio per mUSD invested. Each assessed company's footprint is calculated by normalizing resources consumed by the company's enterprise value including cash (EVIC). We aggregate these figures to portfolio level using a weighted average, multiplying each assessed portfolio constituent's footprint by its respective position weight. For comparison, index footprints are shown besides that of the portfolio. The equivalent factors that are used for comparison between the portfolio and index represent European averages and are based on third-party sources combined with own estimates. As such, the figures presented are intended for illustrative purposes and are purely an indication. Only holdings mapped as corporates are included in the figures.



Source: Robeco data based on Trucost data. *

* Source: S&P Global Market Intelligence data © Trucost 2025. All rights in the Trucost data and reports vest in Trucost and/or its licensors. Neither S&P Global Market Intelligence, nor its affiliates, nor its licensors accept any liability for any errors, omissions or interruptions in the Trucost data and/or reports. No further distribution of the Data and/or Reports is permitted without S&P Global Market Intelligence's express written consent. Reproduction of any information, data or material, including ratings is prohibited. The content is not a recommendation to buy, sell or hold such investment or security, nor does it address suitability of an investment or security and should not be relied on as investment advice.

Engagement

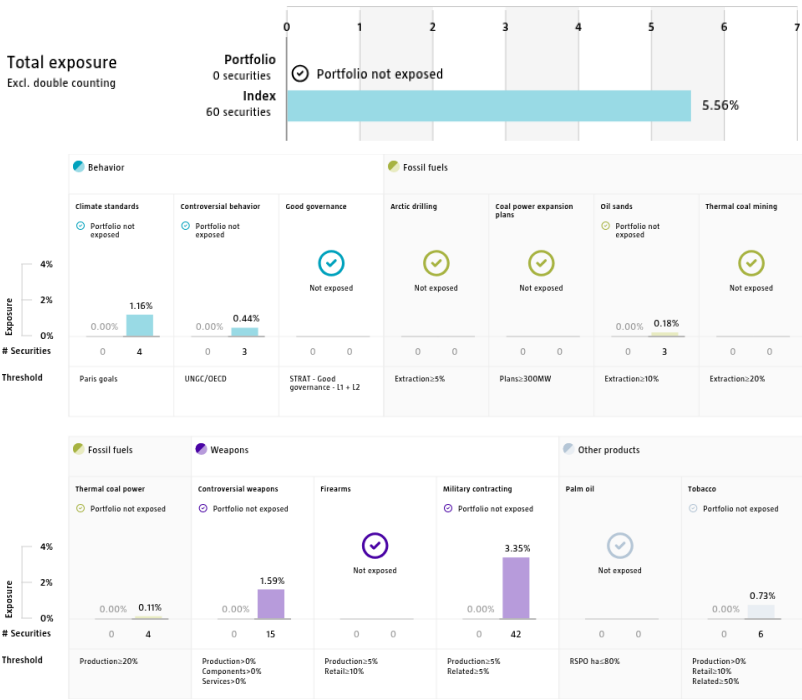
Robeco distinguishes between three types of engagement. Value Engagement focuses on long-term issues that are financially material and/or are causing adverse sustainability impacts. The themes can be broken into Environmental, Social, Governance, or Voting-related. SDG Engagement aims to drive a clear and measurable improvement in a company's SDG contribution. Enhanced engagement is triggered by misconduct and focuses on companies severely breaching international standards. The report is based on all companies in the portfolio for which engagement activities have taken place during the past 12 months. Note that companies may be under engagement in multiple categories simultaneously. While the total portfolio exposure excludes double counting, it may not equal the sum of individual category exposures.

	Portfolio exposure	# companies engaged with	# activities with companies engaged with
Total (* excluding double counting)	31.11%	14	55
Environmental	2.42%	1	5
Social	2.25%	1	3
Governance	15.23%	5	22
Sustainable Development Goals	13.12%	7	22
Voting Related	4.92%	3	3
Enhanced	0.00%	0	0

Source: Robeco. Data derived from internal processes.

Exclusions

The Exclusions charts display the degree of adherence to exclusion applied by Robeco. For reference, index exposures are shown beside that of the portfolio. Thresholds are based on revenues unless otherwise indicated. For more information about the exclusion policy and which level applies, please refer to the Exclusion Policy and Exclusion List available on Robeco.com.



Source: We use several data sources such as Sustainalytics, RSPO (Roundtable on Sustainable Palm Oil), World Bank, Freedom House, Fund for Peace and International Sanctions; further policy document available [Exclusion Policy](#)

Investment policy

Robeco Global SDG Equities is an actively managed fund that invests globally in companies that take action to advance the UN Sustainable Development Goals. The selection of these stocks is based on fundamental analysis. The fund's objective is to achieve a better return than the index. The strategy integrates sustainability throughout the investment process. It uses an internally developed framework (more information on which can be found at www.robeco.com/si) to identify companies whose products and services create a material positive impact on the SDGs.

The fund has sustainable investment as its objective within the meaning of Article 9 of the European Sustainable Finance Disclosure Regulation. The fund advances the UN Sustainable Development Goals (SDGs) by investing in companies whose business models and operational practices are aligned with targets defined by the 17 UN SDGs. The fund integrates ESG (Environmental, Social and Governance) factors in the investment process and applies Robeco's Good Governance policy. The fund applies sustainability indicators, including but not limited to, normative, activity-based and region-based exclusions and proxy voting.

Fund manager's CV

Christoph Wolfensberger is Portfolio Manager and member of the Global Equity team. He is also Lead Portfolio Manager of Robeco's Global SDG Equities strategy. He has over 10 years' experience in sustainability investing. Prior to this, Christoph was a Quantitative Analyst covering sustainability/impact investing within Robeco's Products & Engineering Team, with a focus on customized solutions as well as portfolio optimization. He holds a Master's in Chemistry and in Business Studies from the University of Zurich.

Fiscal product treatment

The fund is established in Luxembourg and is subject to the Luxembourg tax laws and regulations. The fund is not liable to pay any corporation, income, dividend or capital gains tax in Luxembourg. The fund is subject to an annual subscription tax ('tax d'abonnement') in Luxembourg, which amounts to 0.05% of the net asset value of the fund. This tax is included in the net asset value of the fund. The fund can in principle use the Luxembourg treaty network to partially recover any withholding tax on its income.

Fiscal treatment of investor

The fiscal consequences of investing in this fund depend on the investor's personal situation. For private investors in the Netherlands real interest and dividend income or capital gains received on their investments are not relevant for tax purposes. Each year investors pay income tax on the value of their net assets as at 1 January if and inasmuch as such net assets exceed the investor's tax-free allowance. Any amount invested in the fund forms part of the investor's net assets. Private investors who are resident outside the Netherlands will not be taxed in the Netherlands on their investments in the fund. However, such investors may be taxed in their country of residence on any income from an investment in this fund based on the applicable national fiscal laws. Other fiscal rules apply to legal entities or professional investors. We advise investors to consult their financial or tax adviser about the tax consequences of an investment in this fund in their specific circumstances before deciding to invest in the fund.

Sustainability images

The figures shown in the sustainability visuals are calculated on subfund level.

MSCI disclaimer

Source MSCI. MSCI makes no express or implied warranties or representations and shall have no liability whatsoever with respect to any MSCI data contained herein. The MSCI data may not be further redistributed or used as a basis for other indices or any securities or financial products. This report is not approved, endorsed, reviewed or produced by MSCI. None of the MSCI data is intended to constitute investment advice or a recommendation to make (or refrain from making) any kind of investment decision and may not be relied on as such.

Morningstar

Copyright © Morningstar Benelux. All Rights Reserved. The information contained herein: (1) is proprietary to Morningstar and/or its content providers; (2) may not be copied or distributed; and (3) is not warranted to be accurate, complete or timely. Neither Morningstar nor its content providers are responsible for any damages or losses arising from any use of this information. Past performance is no guarantee of future results. For more information on Morningstar, please refer to www.morningstar.com

Febelfin disclaimer

The fact that the sub-fund has obtained this label does not mean that it meets your personal sustainability goals or that the label is in line with requirements arising from any future national or European rules. The label obtained is valid for one year and subject to annual reappraisal. For further information on this label, please visit www.towardsustainability.be.



Disclaimer

This document has been carefully prepared by Robeco Institutional Asset Management B.V. (Robeco). The information contained in this publication is based upon sources of information believed to be reliable. Robeco is not answerable for the accuracy or completeness of the facts, opinions, expectations and results referred to therein. Whilst every care has been taken in the preparation of this document, we do not accept any responsibility for damage of any kind resulting from incorrect or incomplete information. This document is subject to change without notice. The value of the investments may fluctuate. Past performance is no guarantee of future results. If the currency in which the past performance is displayed differs from the currency of the country in which you reside, then you should be aware that due to exchange rate fluctuations the performance shown may increase or decrease if converted into your local currency. Unless otherwise stated, performances are i) net of fees based on transaction prices and ii) with dividends reinvested. Please refer to the prospectus and the Key Information Document of the funds for further details. These are available at the Robeco offices or via the www.robeco.com website. The ongoing charges mentioned in this publication express the operational costs including management fee, service fee, taxe d'abonnement, depositary fee and bank charges and is the one stated in the fund's latest annual report at closing date. The information contained in this document is solely intended for professional investors under the Dutch Act on the Financial Supervision (Wet financieel toezicht) or persons who are authorized to receive such information under any other applicable laws. Robeco Institutional Asset Management B.V. has a license as manager of UCITS and AIFs from the Netherlands Authority for the Financial Markets in Amsterdam.