

Robeco Sustainable Diversified Allocation D EUR

Robeco Sustainable Diversified Allocation is an actively managed global multi asset fund. The fund's objective is to achieve a better return than the index. The fund has a balanced risk profile and uses asset allocation strategies, mainly investing directly in equities and bonds as well as taking exposure to other asset classes such as deposits and money market instruments. The asset allocation strategy is subject to investments and volatility restrictions. The portfolio management team can also use other investment instruments to enhance the risk return profile of the fund.



Ernesto Sanichar, Mathieu van Roon
Fund manager since 08-03-2024

Performance

	Fund	Index
1 m	0.23%	0.27%
3 m	2.88%	3.02%
Ytd	0.66%	1.67%
1 Year	3.13%	5.65%
2 Years	7.41%	9.32%
3 Years	4.53%	6.78%
5 Years	3.47%	5.45%
Since 06-2018	3.73%	

Annualized (for periods longer than one year)
Note: due to a difference in measurement period between the fund and the index, performance differences may arise. For further info, see last page.

Calendar year performance

	Fund	Index
2024	10.39%	13.01%
2023	7.85%	11.27%
2022	-14.15%	-12.93%
2021	10.12%	11.85%
2020	5.29%	
2022-2024	0.73%	3.07%
2020-2024	3.45%	

Annualized (years)

Index

50% MSCI All Country World Index (USD) 50% Bloomberg Global Aggregate(hedged to EUR and denominated into USD)

General facts

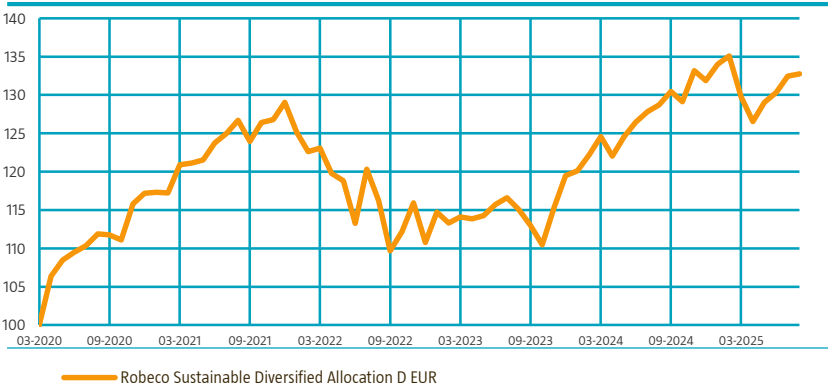
Morningstar	★★★★
Type of fund	Asset Allocation
Currency	EUR
Total size of fund	EUR 135,669,425
Size of share class	EUR 733,064
Outstanding shares	5,625
1st quotation date	08-03-2024
Close financial year	31-12
Ongoing charges	1.36%
Daily tradable	Yes
Dividend paid	No
Ex-ante tracking error limit	-
Management company	Robeco Institutional Asset Management B.V.
Management company	Robeco Institutional Asset Management B.V.

Sustainability profile

- Exclusions
- ESG Integration
- Voting & Engagement
- ESG Target
- Exclusion based on negative screening
- ≥ 15%
- Target Universe

Performance

Indexed value (until 31-08-2025) - Source: Robeco



Performance

Based on transaction prices, the fund's return was 0.23%. The Sustainable Diversified Allocation Fund gained 0.4% in August, finishing slightly ahead of its benchmark. Year-to-date, performance remains broadly in line with the benchmark. A modest equity overweight supported results, while active currency positions – less exposure to the US dollar and more to the yen and euro – were also beneficial. In contrast, the underweight in high yield credit detracted, as stronger risk appetite and solid earnings drove spreads tighter. Within equities, impact investments were mixed. The Circular Economy theme struggled, weighed down by technology weakness, AI-related concerns, and political uncertainty in France. By contrast, the Energy Efficiency cluster delivered the largest contribution, led by Big Data holdings. Notably, Chinese fiber optics company Zhongji Innolight was a strong performer. Credit positioning was a slight headwind. European corporates lagged amid regional volatility, while bank subordinated bonds also detracted. Positively, allocations to BB-rated securities and strong issuer selection helped. The fund's allocation to gold added further support.

Market development

Equities advanced in August, supported by strong earnings, moderating inflation, and expectations of lower interest rates. However, a weaker US dollar reduced gains for euro-based investors. Small caps outperformed large caps, helped by anticipated US rate cuts. Credit markets were also strong, with spreads tightening further in both the US and Europe, while emerging market debt benefited from the softer dollar. Regional equity performance was mixed. The US led with earnings well above expectations. Europe lagged as optimism over fiscal expansion faded, while sentiment in China improved, driven by an extended trade truce, upward earnings revisions, and measures to address overproduction. In fixed income, government bonds came under pressure as 'bond vigilantes' demanded higher yields in response to concerns over fiscal discipline. This steepened yield curves, suggesting long-term rates may face continued upward pressure. Gold rallied sharply, supported by geopolitical uncertainty, ongoing central bank demand, and reduced appetite for US Treasuries.

Fund price

31-08-25	EUR	130.32
High Ytd (19-02-25)	EUR	133.33
Low Ytd (08-04-25)	EUR	119.02

Fees

Management fee	1.15%
Performance fee	None
Service fee	0.16%

Legal status

Investment company with variable capital incorporated under Luxembourg law (SICAV)	
Issue structure	Open-end
UCITS V	Yes
Share class	D EUR
A subfund of Robeco Capital Growth Funds, SICAV	

Registered in

Austria, Belgium, France, Germany, Italy, Luxembourg, Spain, Switzerland

Currency policy

The fund aims to align the currency exposure of the Sub-fund (excluding active currency positions) with the benchmark including through the use of derivatives. The Sub-fund may take active currency positions including through the use of derivatives. The active currency positions may cause the Sub-fund to deviate from the weights of the respective currencies in the relevant benchmark.

Risk management

Risk management is fully embedded in the investment process to ensure that the fund's positions remain within set limits at all times.

Dividend policy

This share class of the fund does not distribute dividend.

Fund codes

ISIN	LU2730330177
Bloomberg	ROBSDEU LX
WKN	A4031Z
Valoren	132462099

Changes

This share class shows performance information prior to its launch date. On the launch date of this share class, the fund absorbed Robeco Multi Asset Sustainable. Performance prior to the launch date has been simulated on the basis of the past performance of the absorbed fund that had similar investment policy and applied comparable charges.

Strategic asset allocation

Equity	50.0%
Fixed Income	50.0%
Alternatives	0.0%
Cash	0.0%

Asset allocation

Equity	46.2%
Fixed Income	45.5%
Alternatives	1.4%
Cash	6.8%

Top 10 largest positions

Holding	%
NVIDIA Corp	2.09%
Microsoft Corp	1.68%
Apple Inc	1.46%
Taiwan Semiconductor Manufacturing Co Lt	0.61%
3.625 NETFLIX INC 15-MAY-2027	0.60%
Broadcom Inc	0.59%
1.963 JPMORGAN CHASE & CO 23-MAR-2030	0.58%
Alphabet Inc (Class A)	0.58%
7.000 BANK OF AMERICA CORP 31-JUL-2028	0.54%
Amazon.com Inc	0.53%
Total	9.26%

ESG Important information

The sustainability information in this factsheet can help investors integrate sustainability considerations in their process. This information is for informational purposes only. The reported sustainability information may not at all be used in relation to binding elements for this fund. A decision to invest should take into account all characteristics or objectives of the fund as described in the prospectus. The prospectus is available on request and free of charge on the Robeco website.

Sustainability

The fund invests a minimum of 80% in Robeco managed or externally managed funds which are classified as Article 8 or 9 under SFDR. For direct line investments, the fund incorporates sustainability in the investment process via exclusions, negative screening, ESG integration, targets on investments in companies and countries based on ESG performance as well as engagement and a minimum allocation to ESG-labeled bonds. For government and government-related bonds, the fund complies with Robeco's exclusion policy for countries, excludes the 15% worst ranked countries following the World Governance Indicator 'Control of Corruption', and ensures investments have a minimum weighted average score of 6 following Robeco's proprietary Country Sustainability Ranking. The Country Sustainability Ranking scores countries on a scale from 1 (worst) to 10 (best) based on 40 environmental, social, and governance indicators. For corporate bonds, the fund does not invest in credit issuers that are in breach of international norms or where activities have been deemed detrimental to society following Robeco's exclusion policy. ESG factors are integrated in the bottom-up security analysis to assess the impact on the issuer's fundamental credit quality. In the credit selection the fund limits exposure to issuers with an elevated sustainability risk profile as well as excludes companies with high or medium negative SDG scores following Robeco's internally developed three-step SDG framework. Where issuers are flagged for breaching international standards in the ongoing monitoring, the issuer will become subject to exclusion.

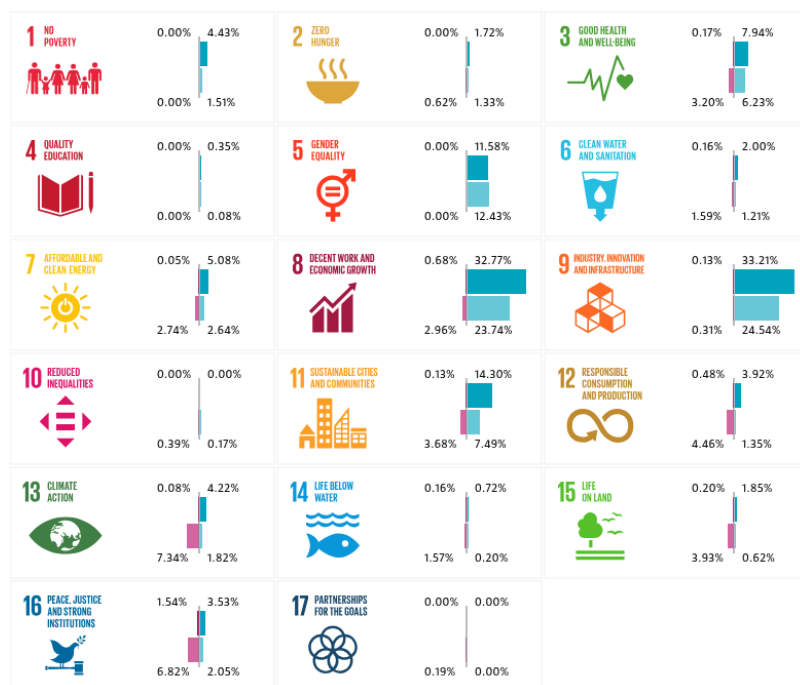
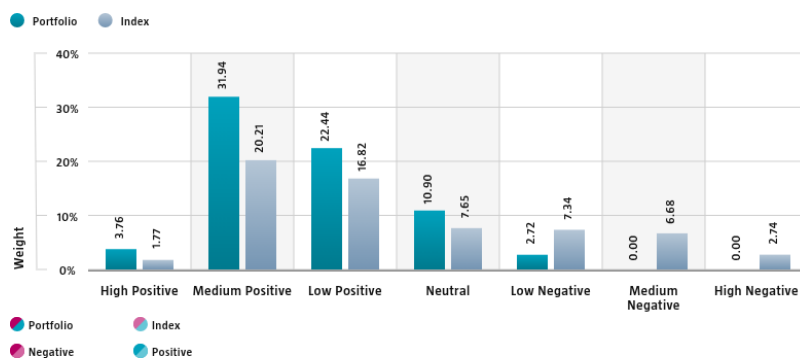
For more information please visit the sustainability-related disclosures.

The index used for all sustainability visuals is based on 50% MSCI All Country World Index (USD) 50% Bloomberg Global Aggregate(hedged to EUR and denominated into USD).

SDG Impact Alignment

This distribution across SDG scores shows the portfolio weight allocated to companies with a positive, negative and neutral impact alignment with the Sustainable Development Goals (SDG) based on Robeco's SDG Framework. The framework utilizes a three-step approach to assess a company's impact alignment with the relevant SDGs and assign a total SDG score. The score ranges from positive to negative impact alignment with levels from high, medium or low impact alignment. This results in a 7-step scale from -3 to +3. For comparison, index figures are provided alongside that of the portfolio. Only holdings mapped as corporates are included in the figures.

Use of the United Nations Sustainable Development Goals (SDG) logos, including the colour wheel, and icons shall only serve explanatory and illustrative purposes and may not be interpreted as an endorsement by the United Nations of this entity, or the product(s) or service(s) mentioned in this document. The opinions or interpretations shown in this document hence do not reflect the opinion or interpretations of the United Nations.

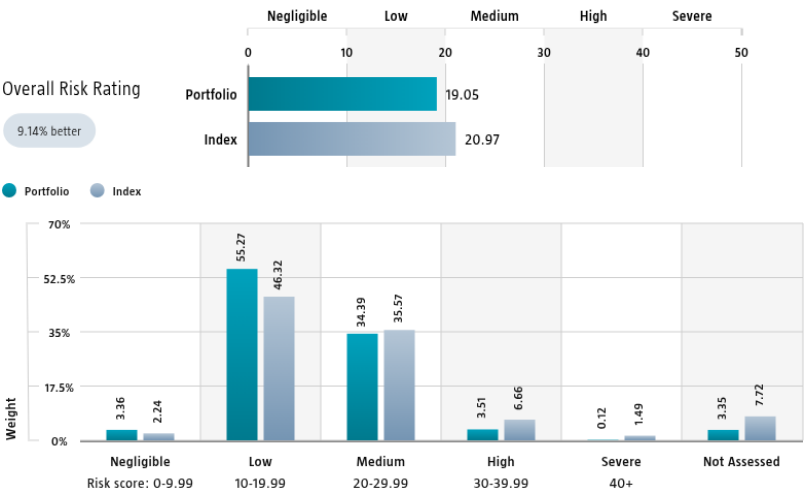


Source: Robeco. Data derived from internal processes.

Sustainalytics ESG Risk Rating

The Portfolio Sustainalytics ESG Risk Rating chart displays the portfolio's ESG Risk Rating. This is calculated by multiplying each portfolio component's Sustainalytics ESG Risk Rating by its respective portfolio weight. The Distribution across Sustainalytics ESG Risk levels chart shows the portfolio allocations broken into Sustainalytics' five ESG risk levels: negligible (0-10), low (10-20), medium (20-30), high (30-40) and severe (40+), providing an overview of portfolio exposure to the different ESG risk levels. Index scores are provided alongside the portfolio scores, highlighting the portfolio's ESG risk level compared to the index.

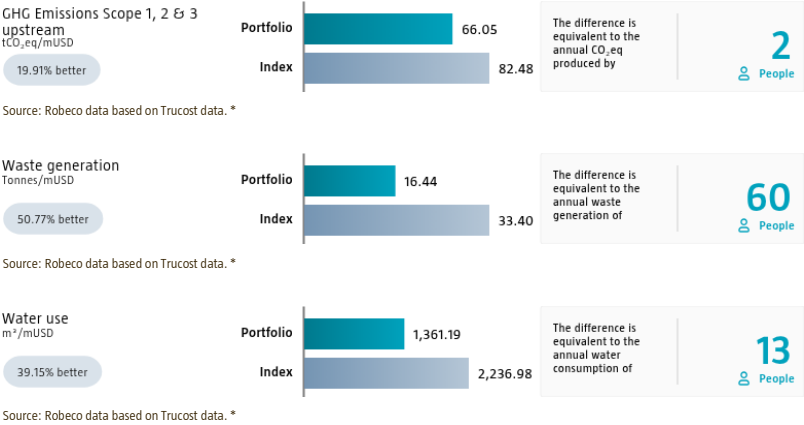
Only holdings mapped as corporates are included in the figures.



Source: Copyright ©2025 Sustainalytics. All rights reserved.

Environmental Footprint

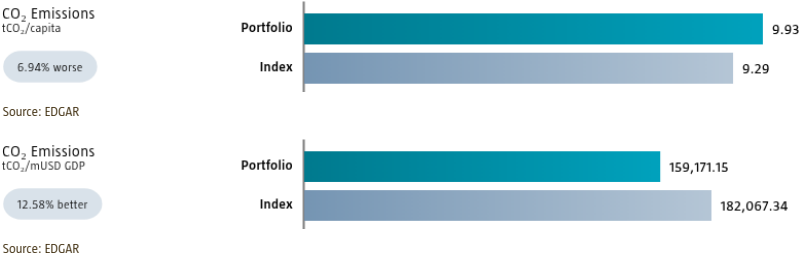
Environmental footprint expresses the total resource consumption of the portfolio per mUSD invested. Each assessed company's footprint is calculated by normalizing resources consumed by the company's enterprise value including cash (EVIC). We aggregate these figures to portfolio level using a weighted average, multiplying each assessed portfolio constituent's footprint by its respective position weight. For comparison, index footprints are shown besides that of the portfolio. The equivalent factors that are used for comparison between the portfolio and index represent European averages and are based on third-party sources combined with own estimates. As such, the figures presented are intended for illustrative purposes and are purely an indication. Only holdings mapped as corporates are included in the figures.



* Source: S&P Global Market Intelligence data © Trucost 2025. All rights in the Trucost data and reports vest in Trucost and/or its licensors. Neither S&P Global Market Intelligence, nor its affiliates, nor its licensors accept any liability for any errors, omissions or interruptions in the Trucost data and/or reports. No further distribution of the Data and/or Reports is permitted without S&P Global Market Intelligence's express written consent. Reproduction of any information, data or material, including ratings is prohibited. The content is not a recommendation to buy, sell or hold such investment or security, nor does it address suitability of an investment or security and should not be relied on as investment advice.

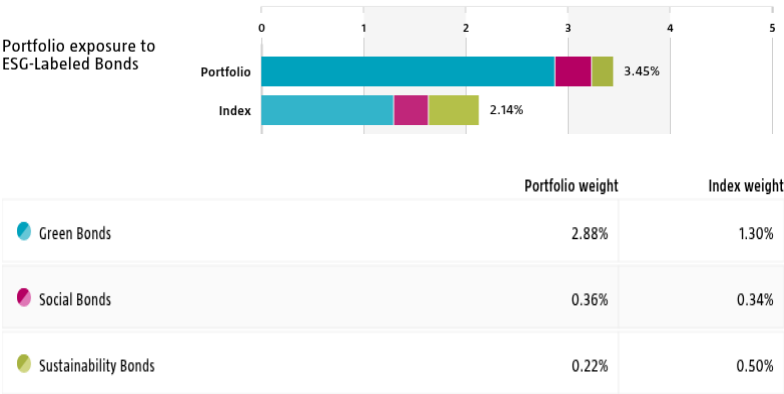
Environmental Intensity

Environmental intensity expresses a portfolio's aggregate environmental efficiency. The portfolio's aggregate carbon intensity is based on the related country emissions. We divide each country's carbon emissions, measured in tCO₂, by the population size or gross domestic product to obtain the country's carbon intensity. The portfolio's aggregate intensity figures are calculated as a weighted average by multiplying each assessed portfolio component's intensity figure with its respective position weight. Index intensities are provided alongside the portfolio intensities, highlighting the portfolio's relative carbon intensity. Only holdings mapped as sovereign bonds are included in the figures.



ESG Labeled Bonds

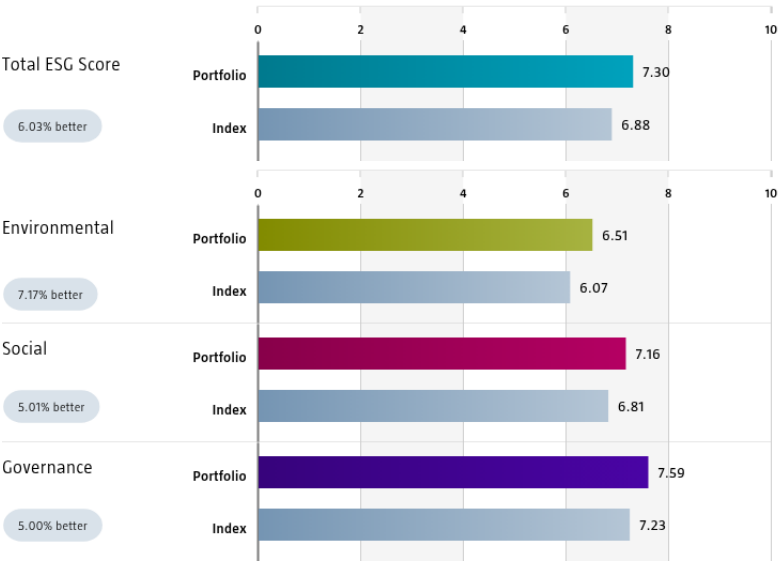
The ESG-labeled bond chart displays the portfolio's exposure to ESG-labeled bonds. Specifically, green bonds, social bonds, sustainability bonds, and sustainability-linked bonds. This is calculated as a sum of weights for those bonds in the portfolio that have one of above mentioned labels. Index exposure figures are provided alongside the portfolio exposure figures, highlighting the difference with the index.



Source: Bloomberg in conjunction with data derived from internal processes. BLOOMBERG® is a trademark and service mark of Bloomberg Finance LP. and its affiliates (collectively "Bloomberg").

Country Sustainability Ranking

The charts displays the portfolio's Total, Environmental, Social and Governance scores following Robeco's Country Sustainability Ranking methodology. These are calculated using the portfolio components' weights and respective country's scores. The scores includes considerations of more than 50 separate indicators, each capturing a unique sustainability feature across environmental, social and governance dimensions at the country level. Index scores are provided alongside the portfolio scores, highlighting the portfolio's relative ESG performance. Only holdings mapped as sovereign bonds are included in the figures.



Source: Robeco. Certain underlying data is sourced from third parties (such as e.g. IMF, OECD and World Bank including Worldwide Governance Indicators Control of Corruption, as well as content from ISS and SanctiO).

Engagement

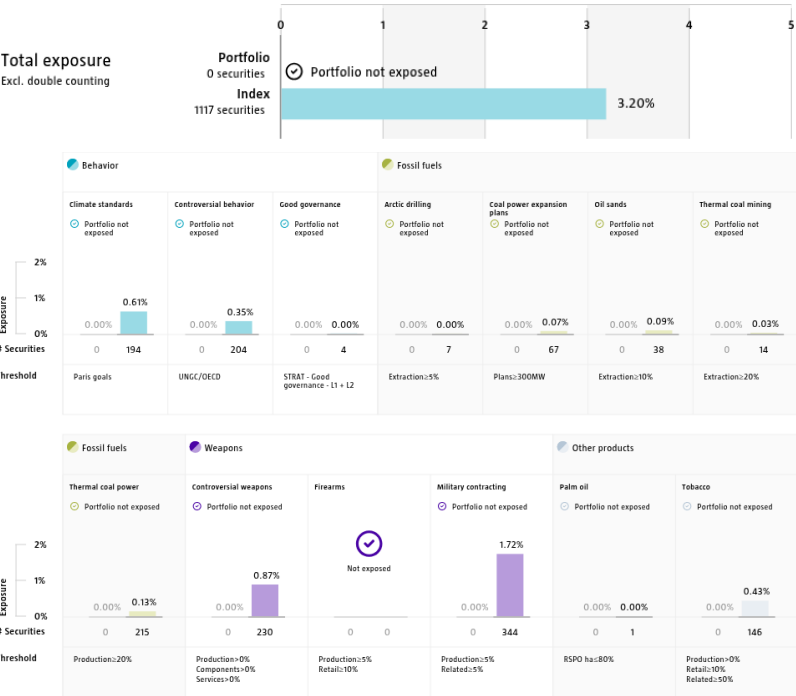
Robeco distinguishes between three types of engagement. Value Engagement focuses on long-term issues that are financially material and/or are causing adverse sustainability impacts. The themes can be broken into Environmental, Social, Governance, or Voting-related. SDG Engagement aims to drive a clear and measurable improvement in a company's SDG contribution. Enhanced engagement is triggered by misconduct and focuses on companies severely breaching international standards. The report is based on all companies in the portfolio for which engagement activities have taken place during the past 12 months. Note that companies may be under engagement in multiple categories simultaneously. While the total portfolio exposure excludes double counting, it may not equal the sum of individual category exposures.

	Portfolio exposure	# companies engaged with	# activities with companies engaged with
Total (* excluding double counting)	16.02%	109	396
Environmental	3.86%	27	95
Social	2.34%	15	48
Governance	3.04%	19	89
Sustainable Development Goals	6.53%	45	151
Voting Related	1.47%	10	10
Enhanced	0.00%	1	3

Source: Robeco. Data derived from internal processes.

Exclusions

The Exclusions charts display the degree of adherence to exclusion applied by Robeco. For reference, index exposures are shown beside that of the portfolio. Thresholds are based on revenues unless otherwise indicated. For more information about the exclusion policy and which level applies, please refer to the Exclusion Policy and Exclusion List available on Robeco.com.



Source: We use several data sources such as Sustainalytics, RSPO (Roundtable on Sustainable Palm Oil), World Bank, Freedom House, Fund for Peace and International Sanctions; further policy document available [Exclusion Policy](#)

Investment policy

Robeco Sustainable Diversified Allocation is an actively managed global multi asset fund. The fund's objective is to achieve a better return than the index. The fund has a balanced risk profile and uses asset allocation strategies, mainly investing directly in equities and bonds as well as taking exposure to other asset classes such as deposits and money market instruments. The asset allocation strategy is subject to investments and volatility restrictions. The portfolio management team can also use other investment instruments to enhance the risk return profile of the fund. The fund promotes E&S (i.e. Environmental and Social) characteristics within the meaning of Article 8 of the European Sustainable Finance Disclosure Regulation, integrates sustainability risks in the investment process and applies Robeco's Good Governance policy. The fund applies sustainability indicators, including but not limited to, normative, activity-based and region-based exclusions.

Fund manager's CV

Ernesto Sanichar is Portfolio Manager and member of the Sustainable Multi Asset team. He is responsible for the Robeco Multi Asset funds, Robeco ONE and Defined contribution funds. His asset specialties are fixed income and FX. He has been part of Robeco's Investment Solutions department since 2005. Previously, he was Treasury Manager for four years. Prior to joining Robeco in 2001, Ernesto worked at ING Barings as a Product controller at the cash equities and derivatives desk for three years. Ernesto started his career in the investment industry in 1998. He holds a Master's in Financial Economics from Erasmus University Rotterdam. Mathieu van Roon is Portfolio Manager and member of the Sustainable Multi Asset team and is responsible for the Robeco Multi Asset funds, Robeco ONE and Defined contribution funds. He joined Robeco in 2011 within the Structured Investments department. Mathieu holds a Master's in both Business Economics and Econometrics (cum Laude) from Erasmus University Rotterdam and is a Financial Risk Manager (FRM) charterholder.

Fiscal product treatment

The fund is established in Luxembourg and is subject to the Luxembourg tax laws and regulations. The fund is not liable to pay any corporation, income, dividend or capital gains tax in Luxembourg. The fund is subject to an annual subscription tax ('tax d'abonnement') in Luxembourg, which amounts to 0.05% of the net asset value of the fund. This tax is included in the net asset value of the fund. The fund can in principle use the Luxembourg treaty network to partially recover any withholding tax on its income.

Morningstar

Copyright © Morningstar Benelux. All Rights Reserved. The information contained herein: (1) is proprietary to Morningstar and/or its content providers; (2) may not be copied or distributed; and (3) is not warranted to be accurate, complete or timely. Neither Morningstar nor its content providers are responsible for any damages or losses arising from any use of this information. Past performance is no guarantee of future results. For more information on Morningstar, please refer to www.morningstar.com

Sustainability images

The figures shown in the sustainability visuals are calculated on subfund level.

Sustainalytics disclaimer

The information, methodologies, data and opinions contained or reflected herein are proprietary of Sustainalytics and/or third parties, intended for internal, non-commercial use, and may not be copied, distributed or used in any way, including via citation, unless otherwise explicitly agreed in writing. They are provided for informational purposes only and (1) do not constitute investment advice; (2) cannot be interpreted as an offer or indication to buy or sell securities, to select a project or make any kind of business transactions; (3) do not represent an assessment of the issuer's economic performance, financial obligations nor of its creditworthiness; (4) are not a substitute for a professional advice; (5) past performance is no guarantee of future results. These are based on information made available by third parties, subject to continuous change and therefore are not warranted as to their merchantability, completeness, accuracy or fitness for a particular purpose. The information and data are provided "as is" and reflect Sustainalytics' opinion at the date of their elaboration and publication. Sustainalytics nor any of its third-party suppliers accept any liability for damage arising from the use of the information, data or opinions contained herein, in any manner whatsoever, except where explicitly required by law. Any reference to third party names is for appropriate acknowledgement of their ownership and does not constitute a sponsorship or endorsement by such owner. Insofar as applicable, researched companies referred herein may have a relationship with different Sustainalytics' business units. Sustainalytics has put in place adequate measures to safeguard the objectivity and independence of its opinions. For more information, contact compliance@sustainalytics.com.

Bloomberg disclaimer

Bloomberg or Bloomberg's licensors own all proprietary rights in the Bloomberg Indices. Neither Bloomberg nor Bloomberg's licensors approves or endorses this material, or guarantees the accuracy or completeness of any information herein, or makes any warranty, express or implied, as to the results to be obtained therefrom and, to the maximum extent allowed by law, neither shall have any liability or responsibility for injury or damages arising in connection therewith.

Disclaimer

This document is exclusively distributed in Switzerland to qualified investors as such terms are defined under the Swiss Collective Investment Schemes Act (CISA) by ACOLIN Fund Services AG which is authorized by the Swiss Financial Market Supervisory Authority FINMA as Swiss representative of the Fund(s) and UBS Switzerland AG, Bahnhofstrasse 45, 8001 Zürich, postal address: Europastrasse 2, P.O. Box, CH-8152 Opfikon, as Swiss paying agent. The Prospectus, the Key Information Documents (PRIIPS), the Articles of Association, the annual and semi-annual reports of the Fund(s), as well as the list of the purchases and sales which the Fund(s) has undertaken during the financial year, may be obtained, on simple request and free of charge, at the head office of the Swiss representative ACOLIN Fund Services AG, Maintower Thurgauerstrasse 36/38 8050 Zurich, Switzerland. If the currency in which the past performance is displayed differs from the currency of the country in which you reside, then you should be aware that due to exchange rate fluctuations the performance shown may increase or decrease if converted into your local currency. The value of the investments may fluctuate. Past performance is no guarantee of future results. The performance data do not take account of the commissions and costs incurred on the issue and redemption of units. Unless otherwise stated, performances are i) net of fees based on transaction prices and ii) with dividends reinvested. Please refer to the prospectus of the funds for further details. The prospectus can be obtained free of charge from the representative and are available. The ongoing charges mentioned in this publication is the one stated in the fund's latest annual report at closing date of the last calendar year. The material and information in this document are provided "as is" and without warranties of any kind, either expressed or implied. ACOLIN Fund Services AG and its related, affiliated and subsidiary companies disclaim all warranties, expressed or implied, including, but not limited to, implied warranties of merchantability and fitness for a particular purpose. All information contained in this document is distributed with the understanding that the authors, publishers and distributors are not rendering legal, accounting or other professional advice or opinions on specific facts or matters and accordingly assume no liability whatsoever in connection with its use. In no event shall ACOLIN Fund Services AG and its related, affiliated and subsidiary companies be liable for any direct, indirect, special, incidental or consequential damages arising out of the use of any opinion or information expressly or implicitly contained in this document. Robeco Institutional Asset Management B.V. (Robeco) has a license as manager of Undertakings for Collective Investment in Transferable Securities (UCITS) and Alternative Investment Funds (AIFs) ("Fund(s)") from The Netherlands Authority for the Financial Markets in Amsterdam. Robeco is subject to limited regulation in the UK by the Financial Conduct Authority. Details about the extent of our regulation by the Financial Conduct Authority are available from us on request.