

## Robeco Biodiversity Equities I USD

Robeco Biodiversity Equities is an actively managed fund that invests in stocks of companies in countries globally which support the sustainable use of natural resources and ecosystem services to help reduce Biodiversity loss. The selection of these stocks is based on fundamental analysis. The fund has sustainable investment as its objective, within the meaning of Article 9 of the Regulation (EU) 2019/2088 of 27 November 2019 on Sustainability-related disclosures in the financial sector. The strategy integrates sustainability criteria as part of the stock selection process and through a theme-specific sustainability assessment. The portfolio is built on the basis of an eligible investment universe that includes companies whose business models contribute to the thematic investment objectives. The assessment regarding relevant SDGs uses an internally developed framework, more information on which can be obtained at [www.robeco.com/si](http://www.robeco.com/si). The fund also aims to achieve a better return than the index.



**David Thomas**  
Fund manager since 31-10-2022

### Performance

	Fund	Index
1 m	3.38%	2.61%
3 m	4.38%	8.41%
Ytd	13.30%	13.78%
1 Year	6.80%	15.68%
2 Years	11.96%	19.98%
Since 11-2022	11.73%	20.89%

Annualized (for periods longer than one year)

Note: due to a difference in measurement period between the fund and the index, performance differences may arise. For further info, see last page.

### Rolling 12 month returns

	Fund
09-2024 - 08-2025	6.80%
09-2023 - 08-2024	17.36%
11-2022 - 08-2023	9.23%

Initial charges or eventual custody charges which intermediaries might apply are not included.

### Index

MSCI World Index TRN

### General facts

Type of fund	Equities
Currency	USD
Total size of fund	USD 8,227,287
Size of share class	USD 34,090
Outstanding shares	249
1st quotation date	31-10-2022
Close financial year	31-12
Ongoing charges	0.98%
Daily tradable	Yes
Dividend paid	No
Ex-ante tracking error limit	-
Management company	Robeco Institutional Asset Management B.V.

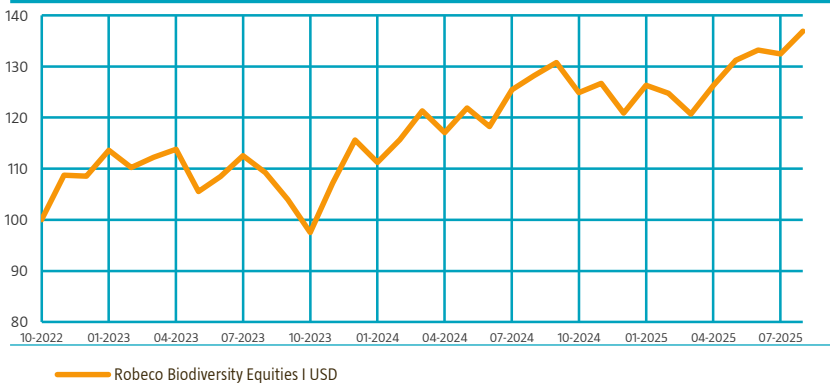
### Sustainability profile

- Exclusions++
- ESG Integration
- Voting
- ESG Target

For more information on exclusions see <https://www.robeco.com/exclusions/>  
For more information on target universe methodology see <https://www.robeco.com/si>

### Performance

Indexed value (until 31-08-2025) - Source: Robeco



### Performance

Based on transaction prices, the fund's return was 3.38%.

The fund outperformed the broader market in August and was marginally ahead of the investable universe. Key drivers of performance this quarter included Montrose Environmental Group, VF Corp, and Lowe's, all of which responded positively to strong quarterly results. Montrose was a standout, surging 37% after beating earnings expectations by nearly 50% and raising full-year guidance. On the other hand, Beiersdorf, Zebra Technologies, and Veolia Environnement weighed on performance. Beiersdorf came under pressure after downgrading FY25 guidance, citing a more challenging US consumer environment. While we remain confident in the group's medium to long-term prospects, we acknowledge that it may take time to rebuild investor confidence. Zebra also sold off following its results, primarily due to market skepticism surrounding the acquisition of Elo Touch Solutions

### Market development

Global markets extended their rally in August, with most major indices posting positive returns. Records continue to be broken despite geopolitical turmoil dominating headlines and growing concerns about the financial returns of AI investment. Nonetheless, the Nasdaq rose more than 1.5%, while the broader S&P 500 gained 2%. In Europe, performance was more subdued, with France once again the laggard, falling -0.9% as political uncertainty around proposed budget cuts weighed on confidence. Asian markets joined the rally, with Japan's Nikkei rising 4% and China's CSI posting an impressive 10% gain, supported by positive economic news and a renewed push for domestic tech.

### Expectation of fund manager

As we move further into the second half of 2025, geopolitical concerns will remain on high alert and will require foresight and patience to navigate. We continue to pursue investments that meet our long-term criteria of having a defensible and sustainable competitive advantage with prudent financial exposure. Now that the tariffs have come into effect, the scale of the impact on global trade and corporate profitability will set the tone for the market.

## Top 10 largest positions

Veolia Environnement SA, Unilever PLC, AECOM, Danone SA, Sensient Technologies, TOMRA Systems ASA, Zebra Technologies Corp, Williams-Sonoma inc., Signify NV, Sika AG.

## Fund price

31-08-25	USD	136.91
High Ytd (22-08-25)	USD	139.19
Low Ytd (08-04-25)	USD	111.25

## Fees

Management fee	0.85%
Performance fee	None
Service fee	0.12%

## Legal status

Investment company with variable capital incorporated under Luxembourg law (SICAV)  
 Issue structure Open-end  
 UCITS V Yes  
 Share class I USD  
 This fund is a subfund of Robeco Capital Growth Funds, SICAV.

## Registered in

Luxembourg, Singapore, Switzerland, United Kingdom

## Currency policy

Currency risk will not be hedged. Exchange-rate fluctuations will therefore directly affect the fund's share price.

## Risk management

Risk management is fully integrated into the investment process to ensure that positions always meet predefined guidelines.

## Dividend policy

This share class of the fund does not distribute dividend.

## Fund codes

ISIN	LU2539441704
Bloomberg	RBCEQIU LX
Valoren	122947573

## Top 10 largest positions

### Holdings

Veolia Environnement SA  
 Unilever PLC  
 AECOM  
 Danone SA  
 Sensient Technologies Corp  
 TOMRA Systems ASA  
 Zebra Technologies Corp

Williams-Sonoma Inc  
 Signify NV  
 Sika AG

### Total

Sector	%
Multi-Utilities	5.54
Personal Products	4.88
Construction & Engineering	4.61
Food Products	4.60
Chemicals	4.23
Machinery	4.17
Electronic Equipment, Instruments & Components	3.65
Specialty Retail	3.64
Electrical Equipment	3.42
Chemicals	3.28
<b>Total</b>	<b>42.02</b>

## Top 10/20/30 weights

TOP 10	42.02%
TOP 20	68.06%
TOP 30	86.08%

## Asset Allocation

Asset allocation		
Equity		97.0%
Cash		3.0%

## Sector allocation

The fund invests in companies exposed to the structural growth trends of the 'Biodiversity' theme. As a consequence, the sectors that make up the majority of the universe are consumer staples, industrials, consumer discretionary, materials, utilities and healthcare. These exposures are reflected in the portfolio, but the strategy is based on bottom-up stock selection and the sector exposures will deviate based on where we find price-valuation discrepancies.

Sector allocation		Deviation index	
Food Products	11.4%		10.5%
Chemicals	11.2%		9.8%
Personal Products	10.6%		10.1%
Machinery	9.4%		7.5%
Construction & Engineering	7.7%		7.3%
Electronic Equipment, Instruments & Components	5.6%		4.8%
Specialty Retail	5.5%		3.9%
Multi-Utilities	5.5%		4.8%
Textiles, Apparel & Luxury Goods	4.6%		3.9%
Life Sciences Tools & Services	3.8%		3.1%
Electrical Equipment	3.4%		2.1%
Household Products	3.2%		2.4%
Other	18.1%		-70.1%

## Regional allocation

The investible universe is skewed towards Europe given the relative abundance of biodiversity investments in the region. We continued to find more compelling ideas in Europe than in the Americas, which resulted in a larger overweight in the region.

Regional allocation		Deviation index	
Europe	50.9%		34.8%
America	41.6%		-33.8%
Asia	7.5%		-0.7%
Middle East	0.0%		-0.3%

## Currency allocation

The strategy is based on bottom-up stock selection. The portfolio is not applying currency hedges.

Currency allocation		Deviation index	
U.S. Dollar	42.1%		-30.3%
Euro	27.8%		19.2%
Pound Sterling	10.5%		6.9%
Japanese Yen	6.8%		1.3%
Norwegian Kroner	5.6%		5.5%
Swiss Franc	3.2%		0.9%
Danish Kroner	2.4%		1.9%
Brasilian Real	1.0%		1.0%
Australian Dollar	0.6%		-1.1%
Swedish Kroner	0.0%		-0.8%
Hong Kong Dollar	0.0%		-0.5%
Other	0.0%		-3.9%

## ESG Important information

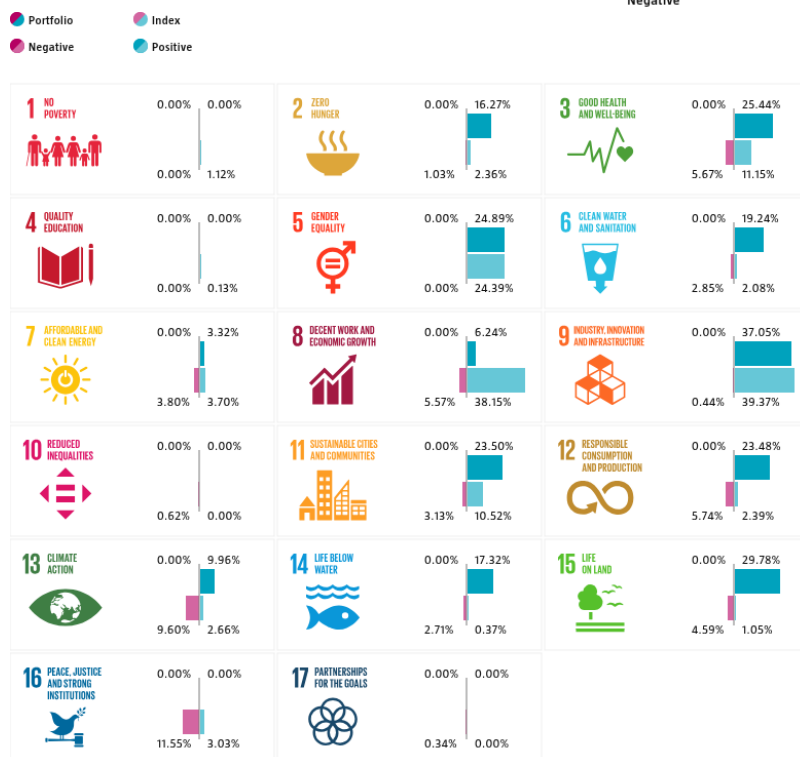
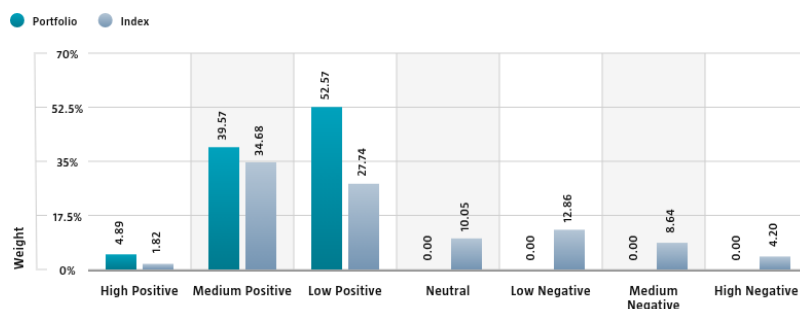
The sustainability information in this factsheet can help investors integrate sustainability considerations in their process. This information is for informational purposes only. The reported sustainability information may not at all be used in relation to binding elements for this fund. A decision to invest should take into account all characteristics or objectives of the fund as described in the prospectus. The prospectus is available on request and free of charge on the Robeco website.

## Sustainability

The fund's sustainable investment objective is to support the sustainable use of natural resources and ecosystem services that help to reduce Biodiversity threats or restore natural habitats. This is achieved by incorporating sustainability considerations in the investment process by the means of a target universe definition, exclusions, ESG integration, and voting. The fund only invests in companies that have a significant thematic fit as per Robeco's thematic universe methodology. Through screening on both Robeco's internally developed SDG Framework and Robeco's exclusion policy, the fund does not invest in issuers that have a negative impact on the SDGs, are in breach of international norms or where products have been deemed controversial. Financially material ESG factors are integrated in the bottom-up fundamental investment analysis to assess existing and potential ESG risks and opportunities. In addition, where a stock issuer is flagged for breaching international standards in the ongoing monitoring, the issuer will become subject to exclusion. Lastly, the fund makes use of shareholder rights and applies proxy voting in accordance with Robeco's proxy voting policy. For more information please visit the sustainability-related disclosures. The index used for all sustainability visuals is based on MSCI World Index TRN.

## SDG Impact Alignment

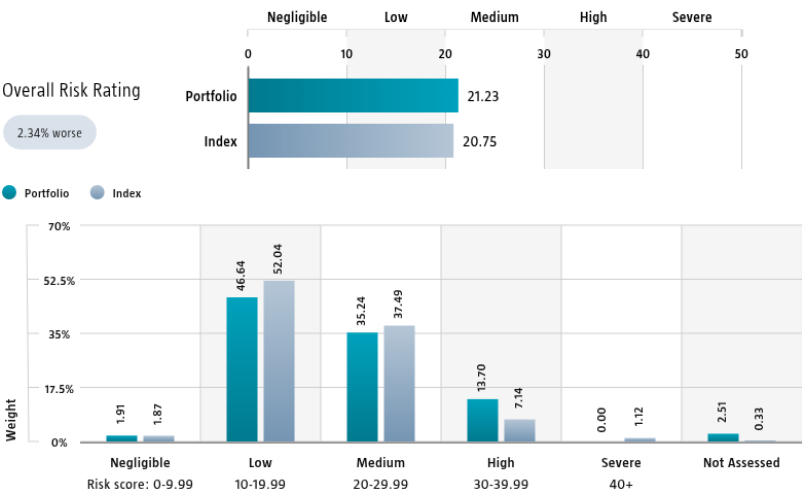
This distribution across SDG scores shows the portfolio weight allocated to companies with a positive, negative and neutral impact alignment with the Sustainable Development Goals (SDG) based on Robeco's SDG Framework. The framework utilizes a three-step approach to assess a company's impact alignment with the relevant SDGs and assign a total SDG score. The score ranges from positive to negative impact alignment with levels from high, medium or low impact alignment. This results in a 7-step scale from -3 to +3. For comparison, index figures are provided alongside that of the portfolio. Only holdings mapped as corporates are included in the figures. Use of the United Nations Sustainable Development Goals (SDG) logos, including the colour wheel, and icons shall only serve explanatory and illustrative purposes and may not be interpreted as an endorsement by the United Nations of this entity, or the product(s) or service(s) mentioned in this document. The opinions or interpretations shown in this document hence do not reflect the opinion or interpretations of the United Nations.



Source: Robeco. Data derived from internal processes.

Sustainalytics ESG Risk Rating

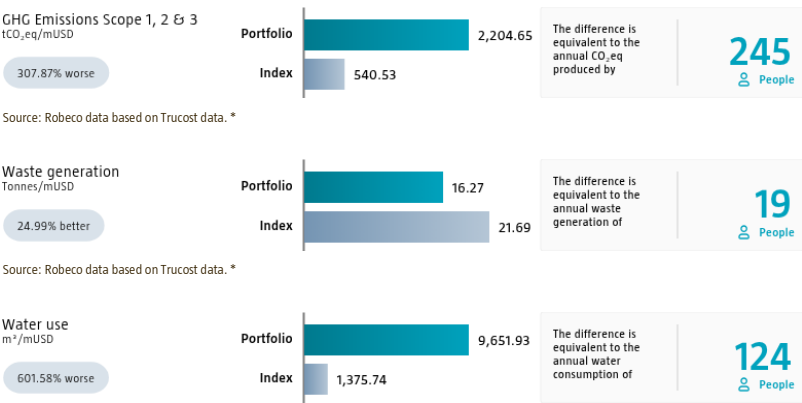
The Portfolio Sustainalytics ESG Risk Rating chart displays the portfolio's ESG Risk Rating. This is calculated by multiplying each portfolio component's Sustainalytics ESG Risk Rating by its respective portfolio weight. The Distribution across Sustainalytics ESG Risk levels chart shows the portfolio allocations broken into Sustainalytics' five ESG risk levels: negligible (0-10), low (10-20), medium (20-30), high (30-40) and severe (40+), providing an overview of portfolio exposure to the different ESG risk levels. Index scores are provided alongside the portfolio scores, highlighting the portfolio's ESG risk level compared to the index. Only holdings mapped as corporates are included in the figures.



Source: Copyright ©2025 Sustainalytics. All rights reserved.

Environmental Footprint

Environmental footprint expresses the total resource consumption of the portfolio per mUSD invested. Each assessed company's footprint is calculated by normalizing resources consumed by the company's enterprise value including cash (EVIC). We aggregate these figures to portfolio level using a weighted average, multiplying each assessed portfolio constituent's footprint by its respective position weight. For comparison, index footprints are shown besides that of the portfolio. The equivalent factors that are used for comparison between the portfolio and index represent European averages and are based on third-party sources combined with own estimates. As such, the figures presented are intended for illustrative purposes and are purely an indication. Only holdings mapped as corporates are included in the figures.



Source: Robeco data based on Trucost data. \*

\* Source: S&P Global Market Intelligence data © Trucost 2025. All rights in the Trucost data and reports vest in Trucost and/or its licensors. Neither S&P Global Market Intelligence, nor its affiliates, nor its licensors accept any liability for any errors, omissions or interruptions in the Trucost data and/or reports. No further distribution of the Data and/or Reports is permitted without S&P Global Market Intelligence's express written consent. Reproduction of any information, data or material, including ratings is prohibited. The content is not a recommendation to buy, sell or hold such investment or security, nor does it address suitability of an investment or security and should not be relied on as investment advice.

## Engagement

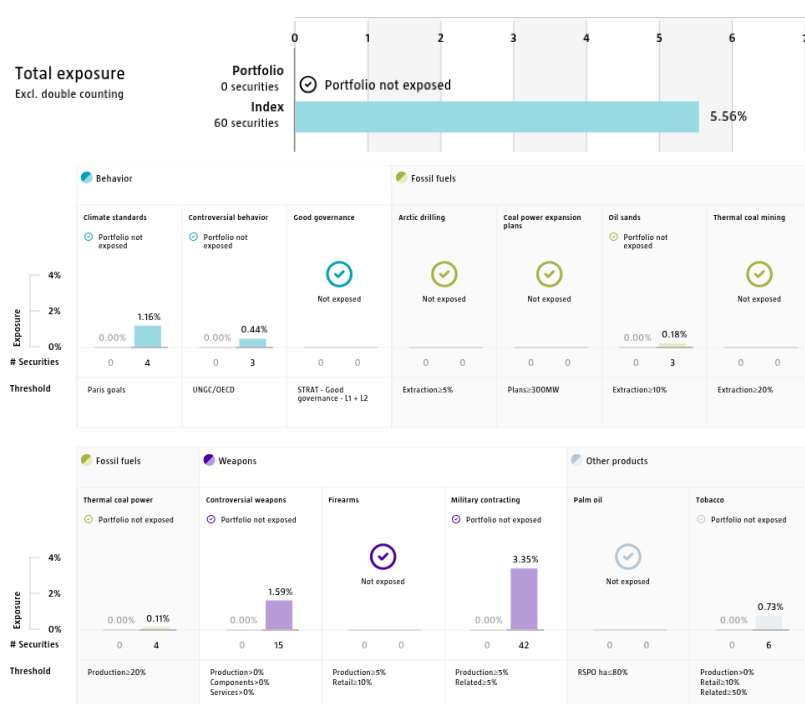
Robeco distinguishes between three types of engagement. Value Engagement focuses on long-term issues that are financially material and/or are causing adverse sustainability impacts. The themes can be broken into Environmental, Social, Governance, or Voting-related. SDG Engagement aims to drive a clear and measurable improvement in a company's SDG contribution. Enhanced engagement is triggered by misconduct and focuses on companies severely breaching international standards. The report is based on all companies in the portfolio for which engagement activities have taken place during the past 12 months. Note that companies may be under engagement in multiple categories simultaneously. While the total portfolio exposure excludes double counting, it may not equal the sum of individual category exposures.

	Portfolio exposure	# companies engaged with	# activities with companies engaged with
Total (* excluding double counting)	47.16%	20	85
Environmental	22.51%	10	25
Social	0.00%	0	0
Governance	15.01%	5	35
Sustainable Development Goals	22.54%	9	24
Voting Related	2.11%	1	1
Enhanced	0.00%	0	0

Source: Robeco. Data derived from internal processes.

## Exclusions

The Exclusions charts display the degree of adherence to exclusion applied by Robeco. For reference, index exposures are shown beside that of the portfolio. Thresholds are based on revenues unless otherwise indicated. For more information about the exclusion policy and which level applies, please refer to the Exclusion Policy and Exclusion List available on Robeco.com.



Source: We use several data sources such as Sustainalytics, RSPO (Roundtable on Sustainable Palm Oil), World Bank, Freedom House, Fund for Peace and International Sanctions; further policy document available [Exclusion Policy](#)

### Investment policy

Robeco Biodiversity Equities is an actively managed fund that invests in stocks of companies in countries globally which support the sustainable use of natural resources and ecosystem services to help reduce Biodiversity loss. The selection of these stocks is based on fundamental analysis. The fund has sustainable investment as its objective, within the meaning of Article 9 of the Regulation (EU) 2019/2088 of 27 November 2019 on Sustainability-related disclosures in the financial sector. The strategy integrates sustainability criteria as part of the stock selection process and through a theme-specific sustainability assessment. The portfolio is built on the basis of an eligible investment universe that includes companies whose business models contribute to the thematic investment objectives. The assessment regarding relevant SDGs uses an internally developed framework, more information on which can be obtained at [www.robeco.com/si](http://www.robeco.com/si). The fund also aims to achieve a better return than the index.

The fund has sustainable investment as its objective within the meaning of Article 9 of the European Sustainable Finance Disclosure Regulation. The fund aims to support the sustainable use of natural resources and ecosystem services, as well as technologies, products and services that help to reduce Biodiversity threats or restore natural habitats. This is done by investing in companies that advance the following UN Sustainable Development Goals (UN SDGs): Good health and well-being (SDG 3), Industry, innovation and

### Fund manager's CV

David Thomas is Portfolio Manager of the Robeco Biodiversity Equities strategy and member of the Thematic Investing team. Prior to joining Robeco in 2022, he was a portfolio manager at Ellerston Capital, managing multiple strategies, including a fund for one of the world's largest sovereign wealth asset owners. David brings 29 years of experience in financial markets having worked for global corporations, including Price Waterhouse Coopers, Macquarie Bank, Morgan Stanley and CLSA. His expertise in equity markets with special focus on the consumer and IT sectors has been honed over multiple roles, both in Sydney and London. David holds a Bachelor of Business from Swinburne University and successfully completed the leadership program at Harvard Business School.

### Fiscal product treatment

The fund is established in Luxembourg and is subject to the Luxembourg tax laws and regulations. The fund is not liable to pay any corporation, income, dividend or capital gains tax in Luxembourg. The fund is subject to an annual subscription tax ('tax d'abonnement') in Luxembourg, which amounts to 0.01% of the net asset value of the fund. This tax is included in the net asset value of the fund. The fund can in principle use the Luxembourg treaty network to partially recover any withholding tax on its income.

### Sustainability images

The figures shown in the sustainability visuals are calculated on subfund level.

### MSCI disclaimer

Source MSCI. MSCI makes no express or implied warranties or representations and shall have no liability whatsoever with respect to any MSCI data contained herein. The MSCI data may not be further redistributed or used as a basis for other indices or any securities or financial products. This report is not approved, endorsed, reviewed or produced by MSCI. None of the MSCI data is intended to constitute investment advice or a recommendation to make (or refrain from making) any kind of investment decision and may not be relied on as such.

### Morningstar

Copyright © Morningstar Benelux. All Rights Reserved. The information contained herein: (1) is proprietary to Morningstar and/or its content providers; (2) may not be copied or distributed; and (3) is not warranted to be accurate, complete or timely. Neither Morningstar nor its content providers are responsible for any damages or losses arising from any use of this information. Past performance is no guarantee of future results. For more information on Morningstar, please refer to [www.morningstar.com](http://www.morningstar.com)

### Febelfin disclaimer

The fact that the sub-fund has obtained this label does not mean that it meets your personal sustainability goals or that the label is in line with requirements arising from any future national or European rules. The label obtained is valid for one year and subject to annual reappraisal. For further information on this label, please visit [www.towardssustainability.be](http://www.towardssustainability.be).



### Disclaimer

This document has been issued by Robeco Institutional Asset Management B.V. (Robeco). The information contained in this publication is based upon sources of information believed to be reliable. Robeco is not answerable for the accuracy or completeness of the facts, opinions, expectations and results referred to therein. Whilst every care has been taken in the preparation of this publication, we do not accept any responsibility for damage of any kind resulting from incorrect or incomplete information. This publication is subject to change without notice.

### Important information

Risk factors you should consider before investing: Markets: The value of investments and the income from them can go down as well as up and you may get back less than the amount invested. Exchange Rates: Investing globally can bring additional returns and diversify risk. However, currency exchange rate fluctuations may have a positive or negative impact on the value of your investment. Country : Less developed countries may face more political, economic or structural challenges than developed countries. This may mean your money is at greater risk. The risks outlined might be particularly relevant to this fund and should always be read in conjunction with all warnings and comments given in the prospectus and KIID for the fund. Other important information: The fund constitutes a recognised scheme under section 264 of the Financial Services and Markets Act. Nothing herein constitutes investment, legal, tax or other advice and is not to be relied upon in making an investment or other decision. No recommendation is made, positive or otherwise, regarding individual securities mentioned. You should seek professional advice before making any investment decisions. This is not an invitation to subscribe for shares in the Fund and is by way of information only. Subscriptions will only be received and shares issued on the basis of the current Prospectus, relevant Key Investor Information Document (KIID) and other supplementary information for the Fund. These can be obtained free of charge from Northern Trust Global Serviced Limited, 50 Bank Street, Canary Wharf, London E14 5NT or from our website [www.robeco.com](http://www.robeco.com). The ongoing charges mentioned in this publication express the operational costs including management fee, service fee, tax, d'abonnement, depositary fee and bank charges and is the one stated in the fund's latest annual report at closing date. Robeco Institutional Asset Management B.V., Rotterdam (Trade Register no. 24123167) is registered with the Netherlands Authority for the Financial Markets in Amsterdam and subject to limited regulation in the UK by the Financial Conduct Authority. Details about the extent of our regulation by the Financial Conduct Authority are available from us on request. Unless otherwise stated, performances are i) net of fees based on transaction prices and ii) with dividends reinvested.